



Rechipper Series Eat-Rite Hogs

HD Rechipper

Bull Screen Rechipper

Dimension Sheet

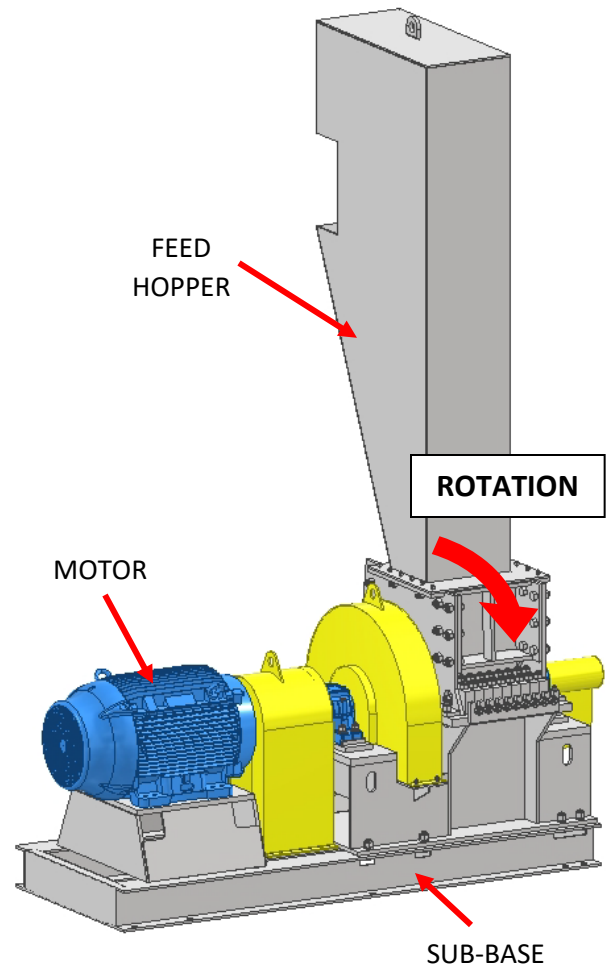
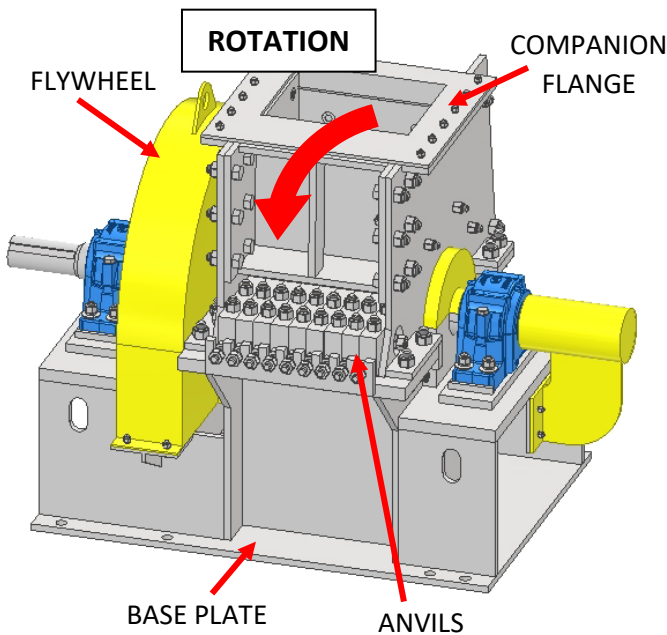
DS 24-23-25

2017 Thelma Street | P.O. Box 3687
Jacksonville, Florida 32206 U.S.A.
Phone: (904) 355-5671
www.montgomeryindustries.com



HD-RC & BS-RC DIMENSION SHEET

DS 24-23-25



[GENERAL NOTES]

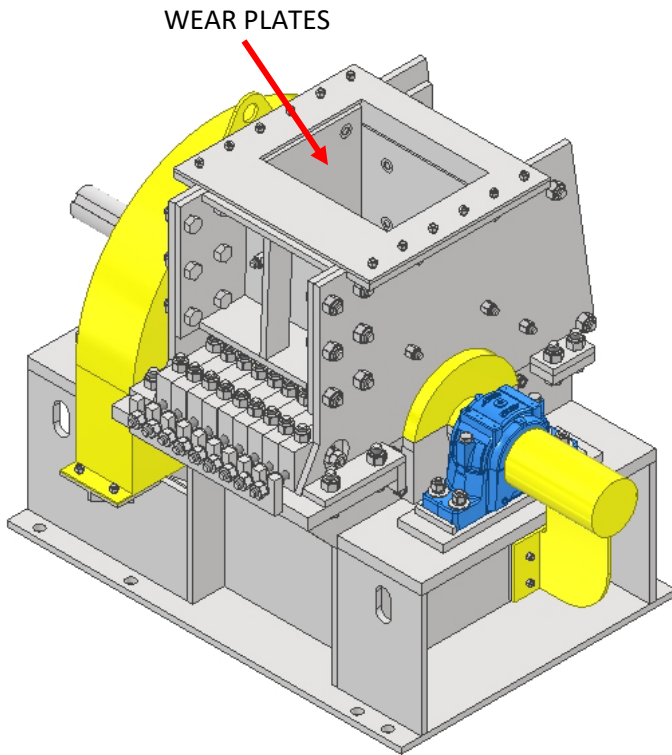
1. **DO NOT FEED AGAINST ROTATION.** FEED MAY BE ANY OF THE OTHER THREE DIRECTIONS.
2. THE HOG MUST BE MOUNTED WITH THE BASE PLATE HORIZONTAL. DO NOT MOUNT THE HOG ON AN ANGLE TO FACILITATE FEEDING. FOUNDATIONS MUST BE SMOOTH, CLEAN, AND LEVEL. **THE UNIT MUST BE SHIMMED PRIOR TO TIGHTENING.** THE UNIT CAN BOW AND BIND, CAUSING EXCESSIVE STRESS IF ANCHORING ALTERS THE INHERENT CONTOUR OF THE BASE PLATE.
3. A REINFORCED CONCRETE FOUNDATION SHOULD EXTEND AT LEAST 6" BEYOND THE HOG ON ALL SIDES. THE MINIMUM THICKNESS IS 12". SEE *BULLETIN 57-06-22 FOUNDATION PREPARATION* FOR MORE INFORMATION.
4. ALL DIMENSIONS SHOWN ARE STANDARD AND MAY VARY WITH INSTALLATIONS.
5. THE HOG CAN BE BUILT OPPOSITE HAND FROM THAT SHOWN. THE FLYWHEEL CAN BE MOUNTED ON THE OPPOSITE END IF REQUESTED BEFORE MANUFACTURING HAS STARTED.
6. TO CONTAIN KICKBACK, THE HOPPER SHOULD BE DESIGNED SO THAT THERE IS A MINIMUM OF 60" FROM THE TOP OF THE FEED CONVEYOR BELT TO THE COMPANION FLANGE ON THE UPPER HOUSING.
7. FEED OPENING "F" VARIES WITH APPLICATION. TYPICALLY, "F" IS EITHER 11-3/8", 13-3/8", OR 17-3/8".
8. ALLOW 36" CLEARANCE AROUND THE MACHINE FOR MAINTENANCE.
9. THERE ARE EIGHT (8) 1-1/4" DIAMETER HOLES FOR SECURING THE HOG TO THE FOUNDATION OR SUB-BASE. FOUNDATION ANCHOR BOLTS TO BE 1" N.C., EXTENDING 3" ABOVE THE REINFORCED CONCRETE FOUNDATION. SEE *BULLETIN 57-06-22 FOUNDATION PREPARATION* FOR MORE INFORMATION.
10. IF THE HOG IS TO BE MOUNTED ON STEEL COLUMNS, THE SUPPORTING STRUCTURE SHOULD BE DESIGNED FOR 2-1/2 TIMES THE STATIC LOAD FOR SAFETY.



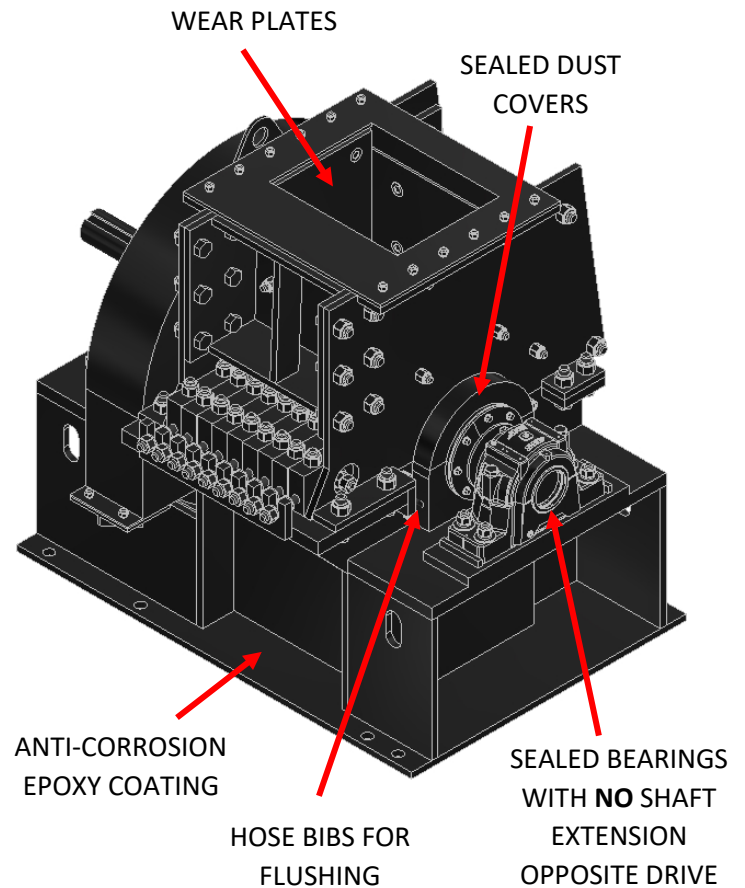
HD-RC & BS-RC DIMENSION SHEET

DS 24-23-25

[HD-RC]



[BS-RC]



[DESIGN NOTES]

THE HD-RC (HD RECHIPPER) AND BS-RC (BULL SCREEN RECHIPPER) ARE BOTH MODIFIED HD SERIES HOGS. SPECIAL RINGS ALLOW FOR A MORE AGGRESSIVE CUT, IDEAL FOR PRE-GROUND CHIPS AND STICKS. WEAR PLATES IN THE CUTTING CHAMBER AND HARDSURFACED RINGS PROVIDE ADDITIONAL PROTECTION IN EXTREMELY ABRASIVE ENVIRONMENTS.

THE HD-RC AND BS-RC ARE DIMENSIONALLY THE SAME, WITH THE EXCEPTION OF SHAFT EXTENSIONS. THE HD-RC HAS AN 8" SHAFT EXTENSION ON BOTH SIDES OF THE HOG. THE BS-RC HAS A SPECIAL MODIFIED SHAFT, WITH **NO** EXTENSION OPPOSITE THE DRIVE SIDE.

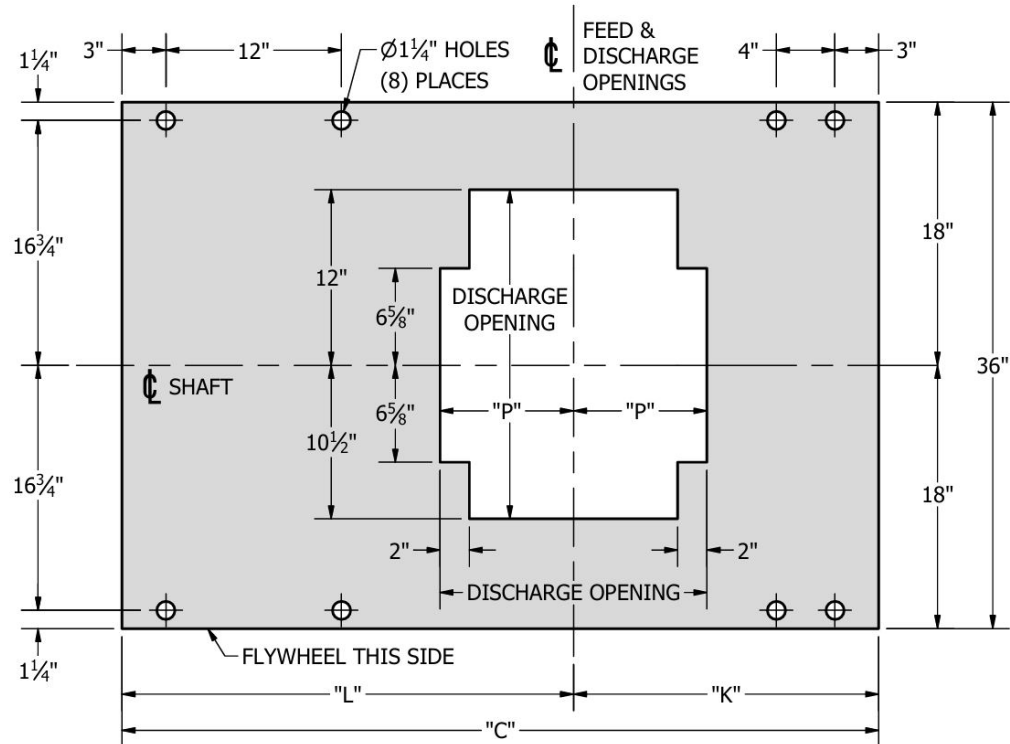
OTHER FEATURES UNIQUE TO THE BS-RC ARE SEALED BEARINGS AND DUST COVERS, HOSE BIBS FOR FLUSHING, STAINLESS STEEL HARDSURFACING, AND A SPECIAL ANTI-CORROSION EPOXY COATING.

DIMENSIONS ARE SHOWN ON THE HD-RC ON THIS DIMENSION SHEET, BECAUSE THE BLACK ANTI-CORROSION EPOXY ON THE BS-RC MAKES IT HARDER TO DISTINGUISH BETWEEN HOUSING COMPONENTS. DIMENSIONS CAN BE SHOWN ON THE BS-RC UPON REQUEST.

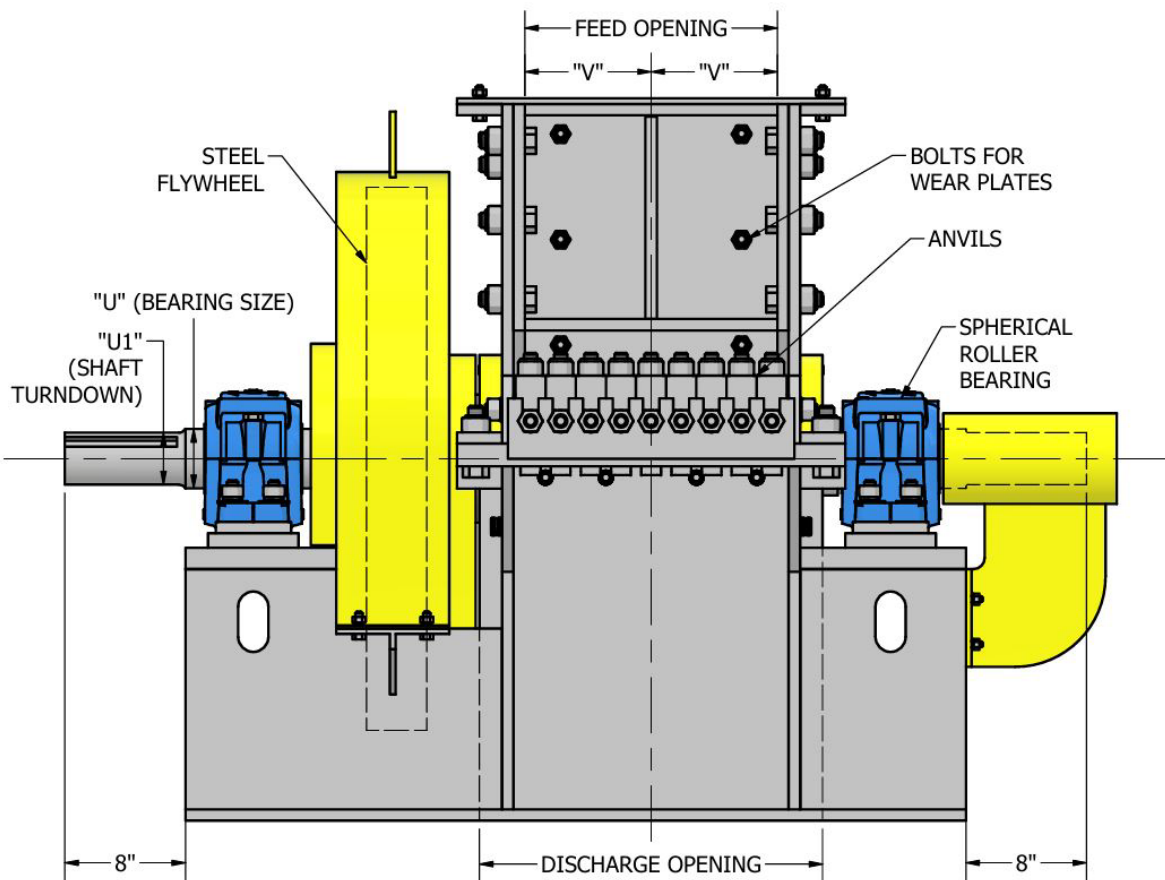
HD-RC & BS-RC DIMENSION SHEET

DS 24-23-25

PLAN VIEW - BASE PLATE ONLY



FRONT ELEVATION





HD-RC & BS-RC DIMENSION SHEET

DS 24-23-25

[HOG DIMENSIONS IN INCHES]

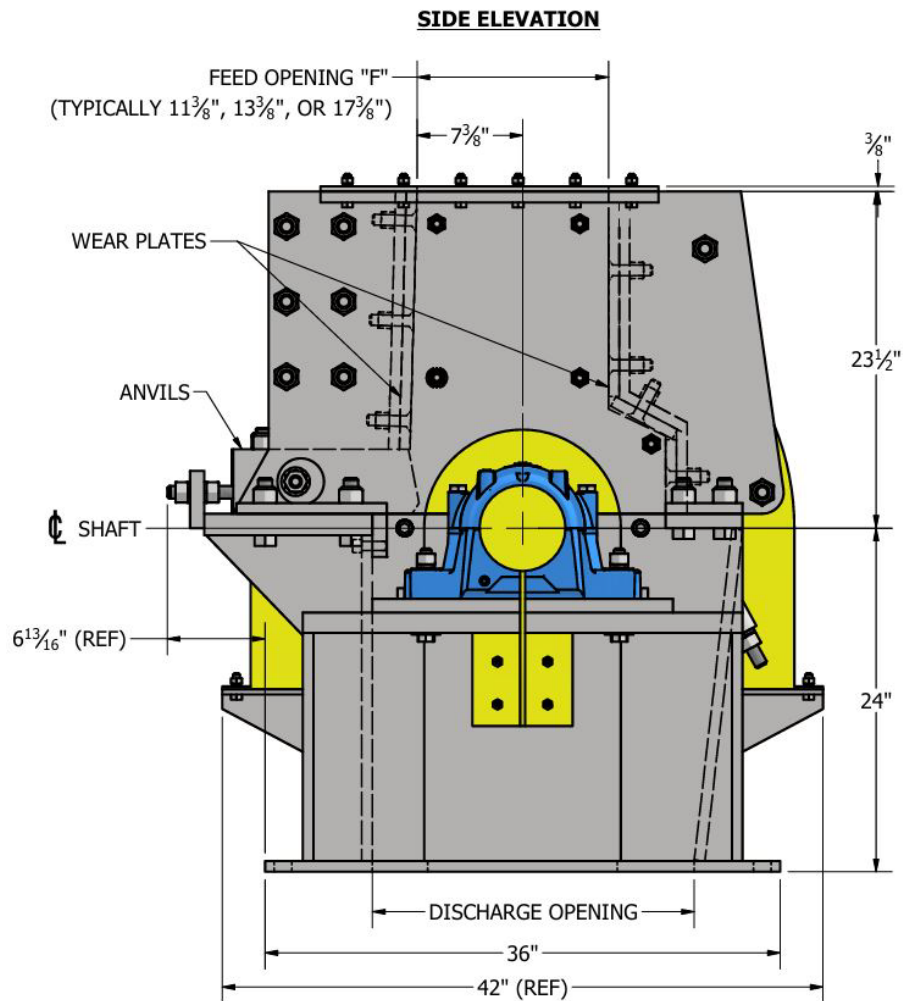
MODEL	BEARING SIZE "U"	STANDARD FLYWHEEL	"C"	"K"	"L"	"P"	"U1"	"V"	DRIVE KEYWAY
10 HD-RC 10 BS-RC	3-15/16	4 X 36	43-3/4	16-7/8	26-7/8	7-1/8	3-7/16	4-3/8	7/8 X 7/16 X 7-7/16
18 HD-RC 18 BS-RC	3-15/16	4 X 36	51-3/4	20-7/8	30-7/8	11-1/8	3-7/16	8-3/8	7/8 X 7/16 X 7-7/16
26 HD-RC 26 BS-RC	3-15/16	4 X 36	59-3/4	24-7/8	34-7/8	15-1/8	3-7/16	12-3/8	7/8 X 7/16 X 7-7/16
34 HD-RC 34 BS-RC	3-15/16	4 X 36	67-3/4	28-7/8	38-7/8	19-1/8	3-7/16	16-3/8	7/8 X 7/16 X 7-7/16
42 HD-RC 42 BS-RC	3-15/16	4 X 36	75-3/4	32-7/8	42-7/8	23-1/8	3-7/16	20-3/8	7/8 X 7/16 X 7-7/16
50 HD-RC 50 BS-RC	3-15/16	4 X 36	83-3/4	36-7/8	46-7/8	27-1/8	3-7/16	24-3/8	7/8 X 7/16 X 7-7/16
58 HD-RC 58 BS-RC	3-15/16	4 X 36	91-3/4	40-7/8	50-7/8	31-1/8	3-7/16	28-3/8	7/8 X 7/16 X 7-7/16

3-15/16" Bearings and 4" X 36" Flywheel are standard components for all Rechipper Series hogs. Larger bearings and corresponding flywheel are available upon request.



HD-RC & BS-RC DIMENSION SHEET

DS 24-23-25



[HOG WEIGHT AND ROTOR INERTIA]

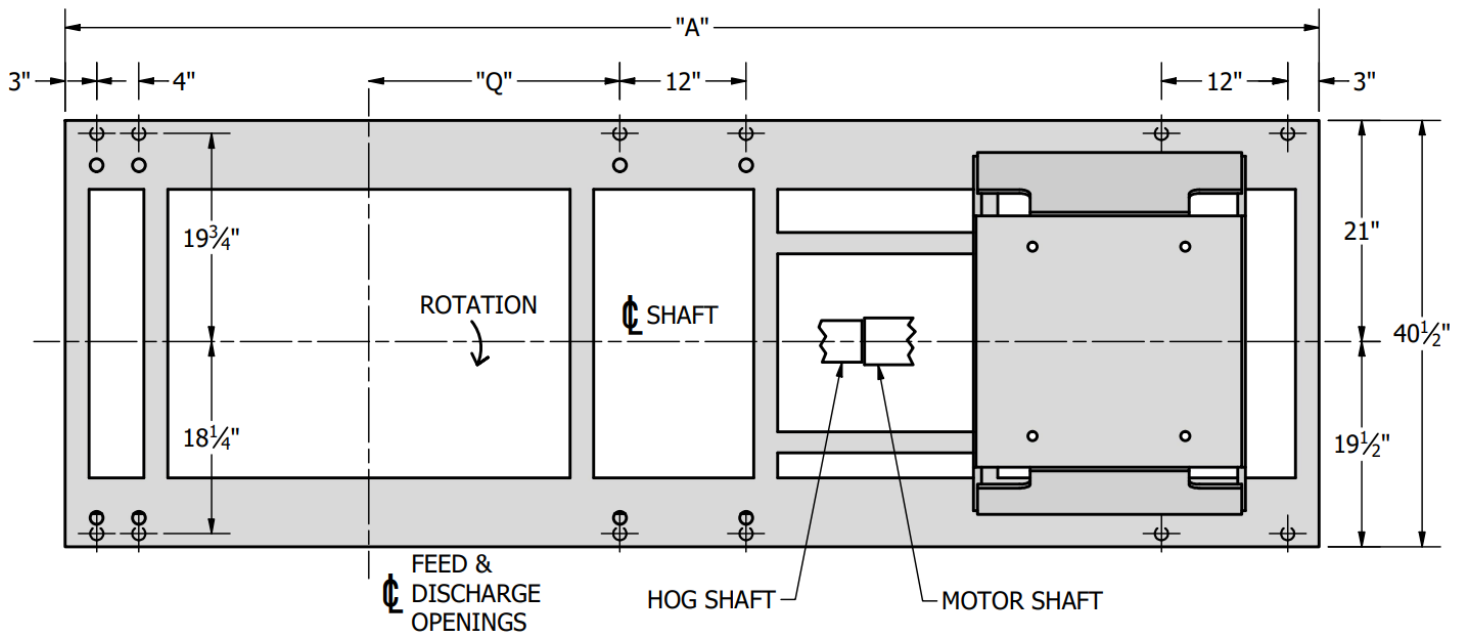
MODEL	BEARING SIZE	WEIGHT (LBS)	WR ² (#FT ²)
10 HD-RC 10 BS-RC	3-15/16"	5200	1377
18 HD-RC 18 BS-RC	3-15/16"	6100	1439
26 HD-RC 26 BS-RC	3-15/16"	7000	1501
34 HD-RC 34 BS-RC	3-15/16"	7900	1563
42 HD-RC 42 BS-RC	3-15/16"	8800	1625
50 HD-RC 50 BS-RC	3-15/16"	9700	1687
58 HD-RC 58 BS-RC	3-15/16"	10600	1748



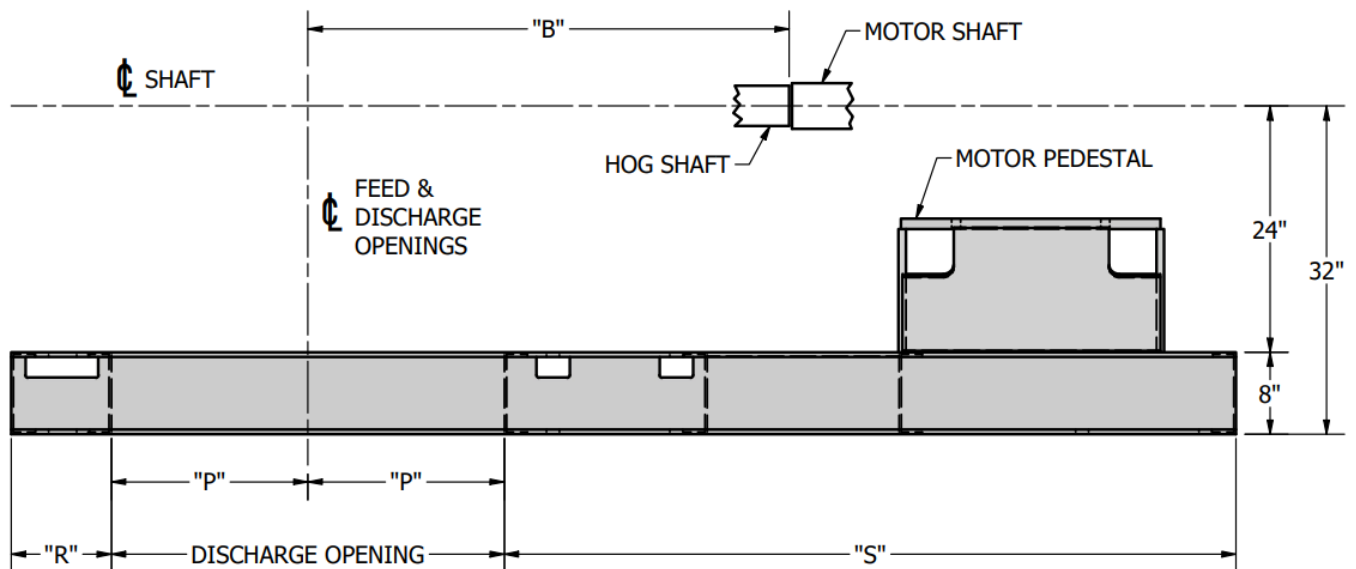
HD-RC & BS-RC DIMENSION SHEET

DS 24-23-25

SUB-BASE OVERHEAD VIEW



SUB-BASE FRONT ELEVATION

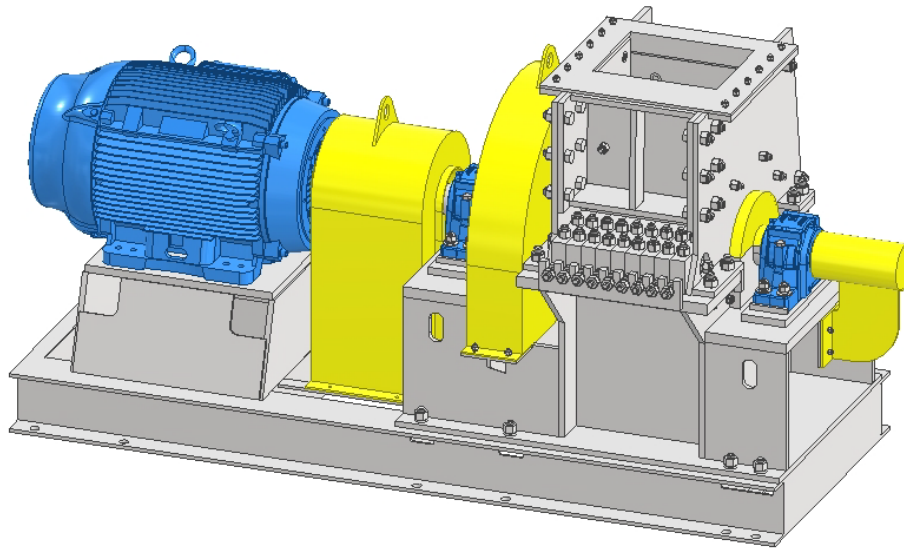




HD-RC & BS-RC DIMENSION SHEET

DS 24-23-25

[SUB-BASE WEIGHT]



MODEL	WEIGHT (LBS)
10 HD-RC 10 BS-RC	1173
18 HD-RC 18 BS-RC	1226
26 HD-RC 26 BS-RC	1279
34 HD-RC 34 BS-RC	1332
42 HD-RC 42 BS-RC	1385
50 HD-RC 50 BS-RC	1438
58 HD-RC 58 BS-RC	1491

[SUB-BASE DIMENSIONS IN INCHES]

MODEL	BEARING SIZE	"A"	"B"	"P"	"Q"	"R"	"S"
10 HD-RC 10 BS-RC	3-15/16	95-1/4	34-7/8	7-1/8	11-7/8	9-3/4	71-1/4
18 HD-RC 18 BS-RC	3-15/16	103-1/4	38-7/8	11-1/8	15-7/8	9-3/4	71-1/4
26 HD-RC 26 BS-RC	3-15/16	111-1/4	42-7/8	15-1/8	19-7/8	9-3/4	71-1/4
34 HD-RC 34 BS-RC	3-15/16	119-1/4	46-7/8	19-1/8	23-7/8	9-3/4	71-1/4
42 HD-RC 42 BS-RC	3-15/16	127-1/4	50-7/8	23-1/8	27-7/8	9-3/4	71-1/4
50 HD-RC 50 BS-RC	3-15/16	135-1/4	54-7/8	27-1/8	31-7/8	9-3/4	71-1/4
58 HD-RC 58 BS-RC	3-15/16	143-1/4	58-7/8	31-1/8	35-7/8	9-3/4	71-1/4