



PM Model Blo-Hog

Dimension Sheet

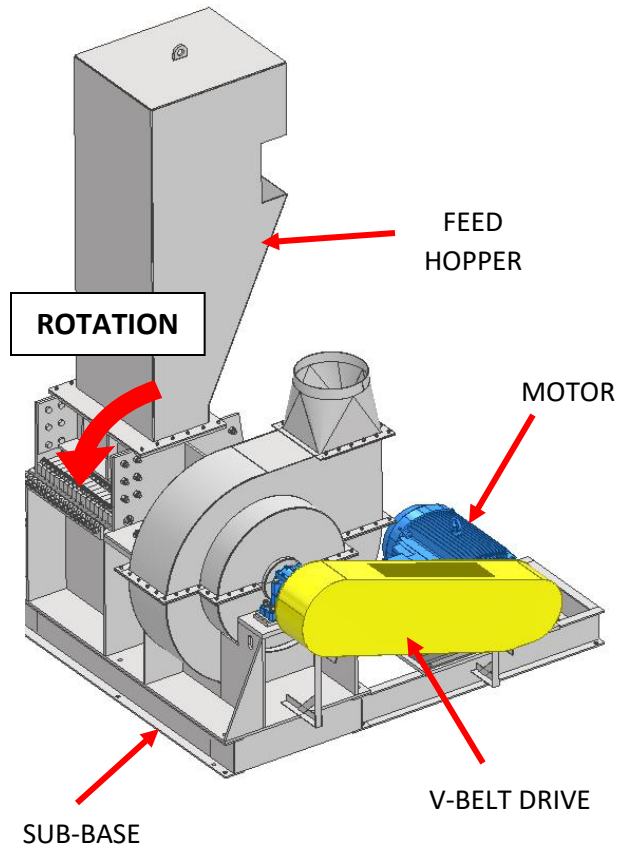
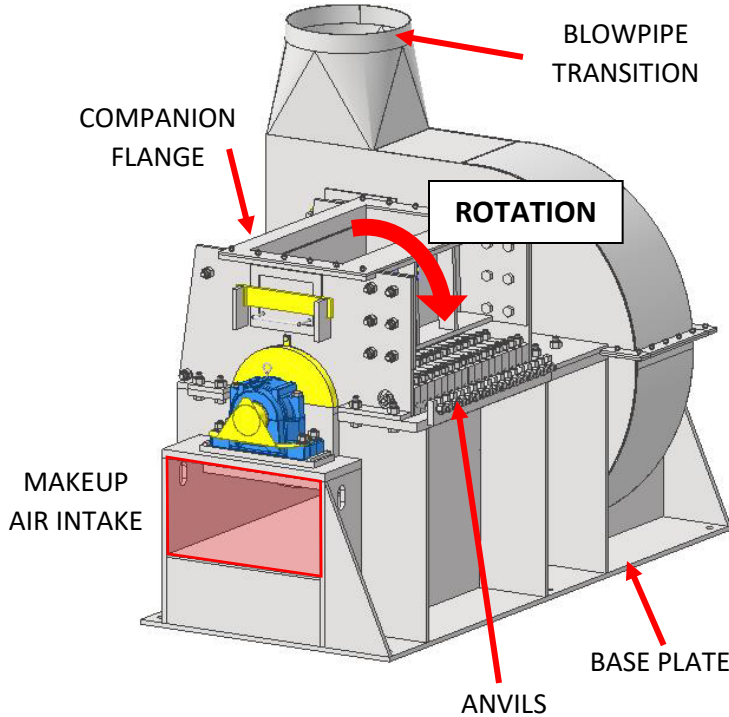
DS 24-04-24

2017 Thelma Street | P.O. Box 3687
Jacksonville, Florida 32206 U.S.A.
Phone: (904) 355-5671
www.montgomeryindustries.com



PM-BH DIMENSION SHEET

DS 24-04-24



[GENERAL NOTES]

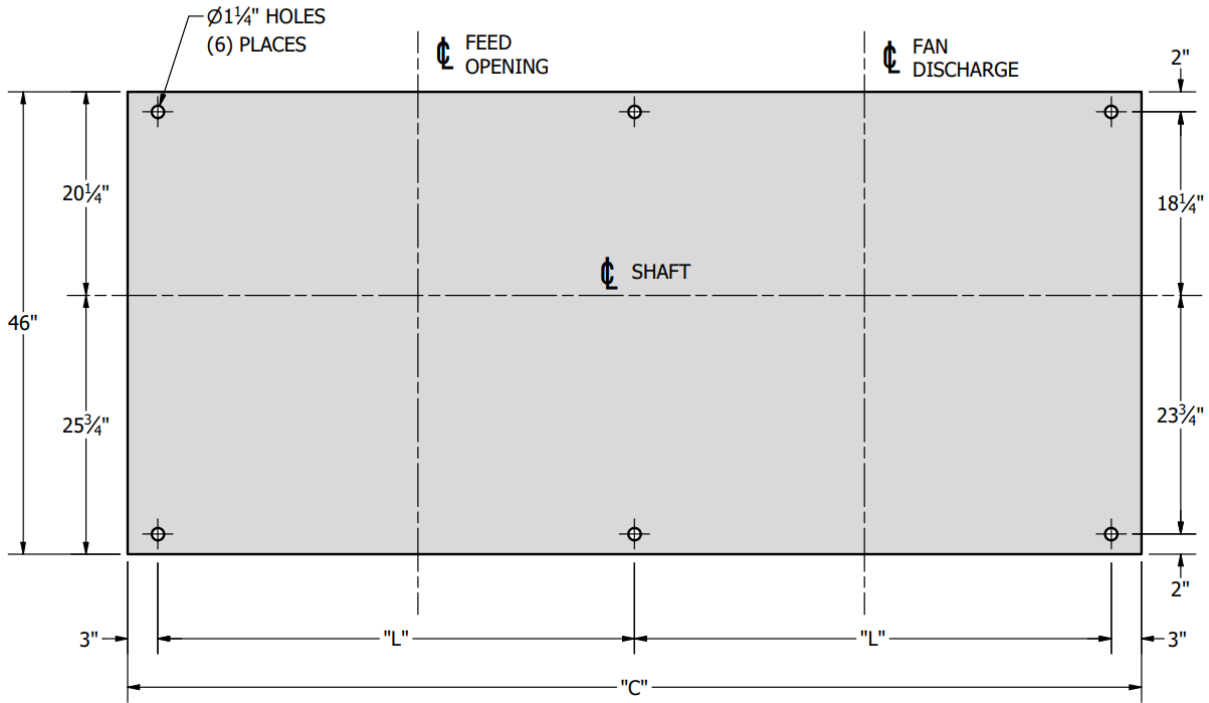
1. **DO NOT FEED AGAINST ROTATION.** FEED MAY BE ANY OF THE OTHER THREE DIRECTIONS.
2. THE HOG MUST BE MOUNTED WITH THE BASE PLATE HORIZONTAL. DO NOT MOUNT THE HOG ON AN ANGLE TO FACILITATE FEEDING. FOUNDATIONS MUST BE SMOOTH, CLEAN, AND LEVEL. **THE UNIT MUST BE SHIMMED PRIOR TO TIGHTENING.** THE UNIT CAN BOW AND BIND, CAUSING EXCESSIVE STRESS IF ANCHORING ALTERS THE INHERENT CONTOUR OF THE BASE PLATE.
3. A REINFORCED CONCRETE FOUNDATION SHOULD EXTEND AT LEAST 6" BEYOND THE HOG ON ALL SIDES. THE MINIMUM THICKNESS IS 12". SEE *BULLETIN 57-06-22 FOUNDATION PREPARATION* FOR MORE INFORMATION.
4. ALL DIMENSIONS SHOWN ARE STANDARD AND MAY VARY WITH INSTALLATIONS.
5. THE HOG CAN BE BUILT OPPOSITE HAND FROM THAT SHOWN. THE FLYWHEEL AND FAN CAN BE ON THE OPPOSITE END IF REQUESTED BEFORE MANUFACTURING HAS STARTED.
6. TO CONTAIN KICKBACK, THE HOPPER SHOULD BE DESIGNED SO THAT THERE IS A MINIMUM OF 60" FROM THE TOP OF THE FEED CONVEYOR BELT TO THE COMPANION FLANGE ON THE UPPER HOUSING.
7. FEED OPENING "F" VARIES WITH APPLICATION. TYPICALLY, "F" IS EITHER 17" OR 21".
8. ALLOW 36" CLEARANCE AROUND THE MACHINE FOR MAINTENANCE. **DO NOT BLOCK THE MAKEUP AIR INLET.**
9. BLO-HOG MODELS SHOULD HAVE SPEED AND POWER CORRECTED FOR ALTITUDE FOR INSTALLATIONS ABOVE 2000 FT MSL.
10. THERE ARE SIX (6) 1-1/4" DIAMETER HOLES IN THE BASE PLATE FOR SECURING TO THE FOUNDATION OR SUB-BASE. FOUNDATION ANCHOR BOLTS TO BE 1" N.C., EXTENDING 3" ABOVE THE REINFORCED CONCRETE FOUNDATION. SEE *BULLETIN 57-06-22 FOUNDATION PREPARATION* FOR MORE INFORMATION.
11. IF THE HOG IS TO BE MOUNTED ON STEEL COLUMNS, THE SUPPORTING STRUCTURE SHOULD BE DESIGNED FOR 2-1/2 TIMES THE STATIC LOAD FOR SAFETY.



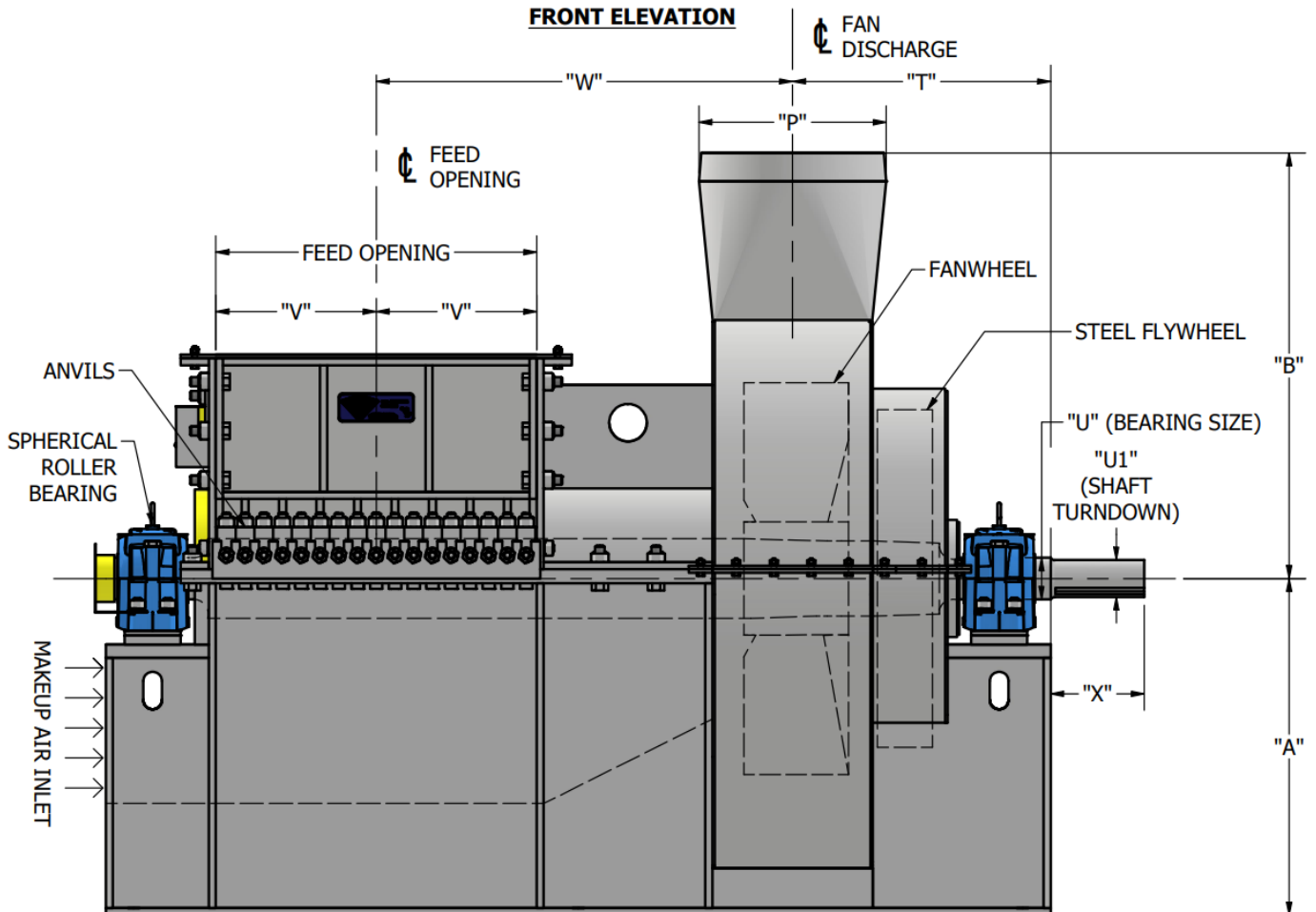
PM-BH DIMENSION SHEET

DS 24-04-24

PLAN VIEW - BASE PLATE ONLY



FRONT ELEVATION





PM-BH DIMENSION SHEET

DS 24-04-24

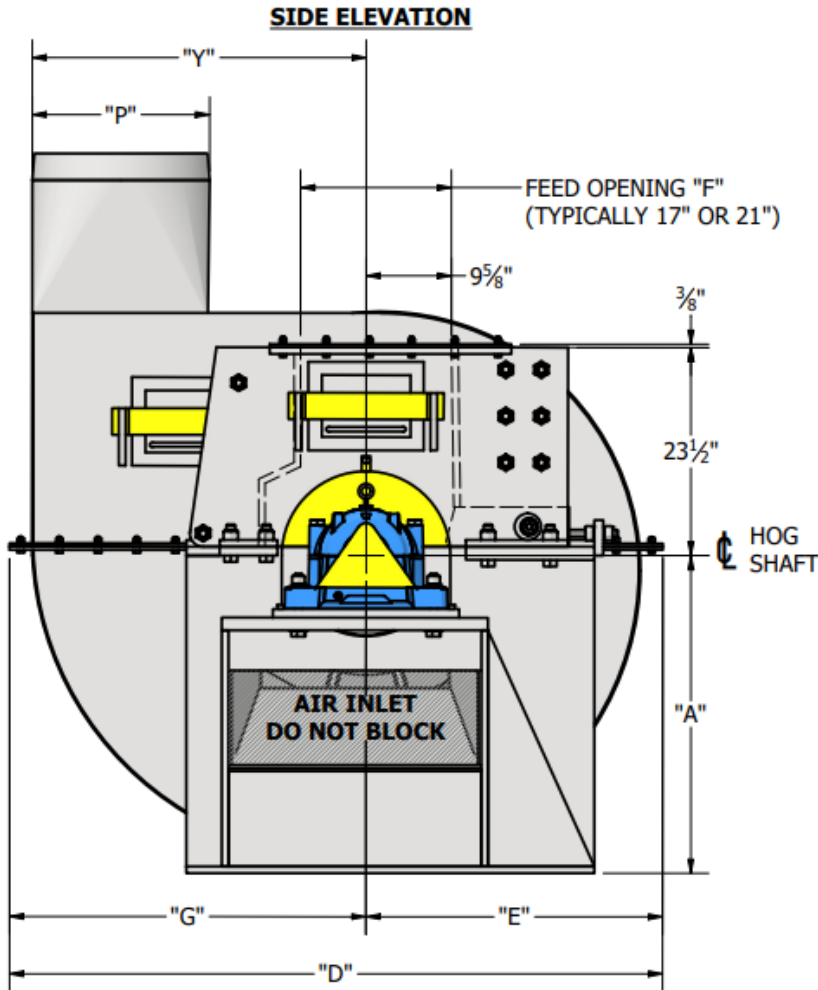
[HOG DIMENSIONS IN INCHES]

MODEL	BEARING SIZE "U"	STANDARD FLYWHEEL	"A"	"B"	"C"	"L"	"P" (RANGE)	"T"	"U1"	"V"	"W"	"X"	DRIVE KEYWAY
18PM40	4-7/16	4 X 36	28-3/4	39-3/4	75-3/8	34-11/16	13 – 17	25-13/16	3-15/16	9-1/8	28-11/16	8	1 X 1/2 X 7-1/2
18PM50	4-7/16	6 X 36	35-7/8	45-3/8	84-7/8	39-7/16	18 – 21	27-9/16			36-7/16		
26PM40	4-7/16	6 X 36	28-3/4	39-3/4	83-3/8	38-11/16	13 – 17	25-13/16	3-15/16	13-1/8	32-11/16	8	1 X 1/2 X 7-1/2
26PM50	4-7/16		35-7/8	45-3/8	92-7/8	43-7/16	18 – 21	27-9/16	3-15/16		40-7/16		
26PM60	5-7/16		41-3/4	50-1/4	97-1/2	45-3/4	22 – 25	30	4-7/16		41-3/4		
34PM40	4-7/16	6 X 36	28-3/4	39-3/4	91-3/8	42-11/16	13 – 17	25-13/16	3-15/16	17-1/8	36-11/16	10	1 X 1/2 X 8-1/2
34PM50	5-7/16				93-3/8	43-11/16		26-13/16	4-7/16				
	4-7/16		35-7/8	45-3/8	100-7/8	47-7/16	18 – 21	27-9/16	3-15/16		44-7/16		
5-7/16	102-7/8				48-7/16	28-9/16		4-7/16					
34PM60	5-7/16		41-3/4	50-1/4	105-1/2	49-3/4	22 – 25	30	4-7/16		45-3/4		
42PM40	4-7/16	6 X 36	28-3/4	39-3/4	99-3/8	46-11/16	13 – 17	25-13/16	3-15/16	21-1/8	40-11/16	10	1 X 1/2 X 8-1/2
42PM50	5-7/16				101-3/8	47-11/16		26-13/16	4-7/16				
	4-7/16		35-7/8	45-3/8	108-7/8	51-7/16	18 – 21	27-9/16	3-15/16		48-7/16		
5-7/16	110-7/8				52-7/16	28-9/16		4-7/16					
42PM60	5-7/16		41-3/4	50-1/4	113-1/2	53-3/4	22 – 25	30	4-7/16		49-3/4		
50PM40	5-7/16	6 X 36	28-3/4	39-3/4	109-3/8	51-11/16	13 – 17	26-13/16	4-7/16	25-1/8	44-11/16	10	1 X 1/2 X 8-1/2
50PM50	5-7/16		35-7/8	45-3/8	118-7/8	56-7/16	18 – 21	28-9/16			52-7/16		
50PM60	5-7/16		41-3/4	50-1/4	121-1/2	57-3/4	22 – 25	30			53-3/4		
58PM50	5-7/16	6 X 36	35-7/8	45-3/8	126-7/8	60-7/16	18 – 21	28-9/16	4-7/16	29-1/8	56-7/16	10	1 X 1/2 X 8-1/2
66PM50	5-7/16	6 X 36	35-7/8	45-3/8	134-7/8	64-7/16	18 – 21	28-9/16	4-7/16	33-1/8	60-7/16	10	1 X 1/2 X 8-1/2



PM-BH DIMENSION SHEET

DS 24-04-24



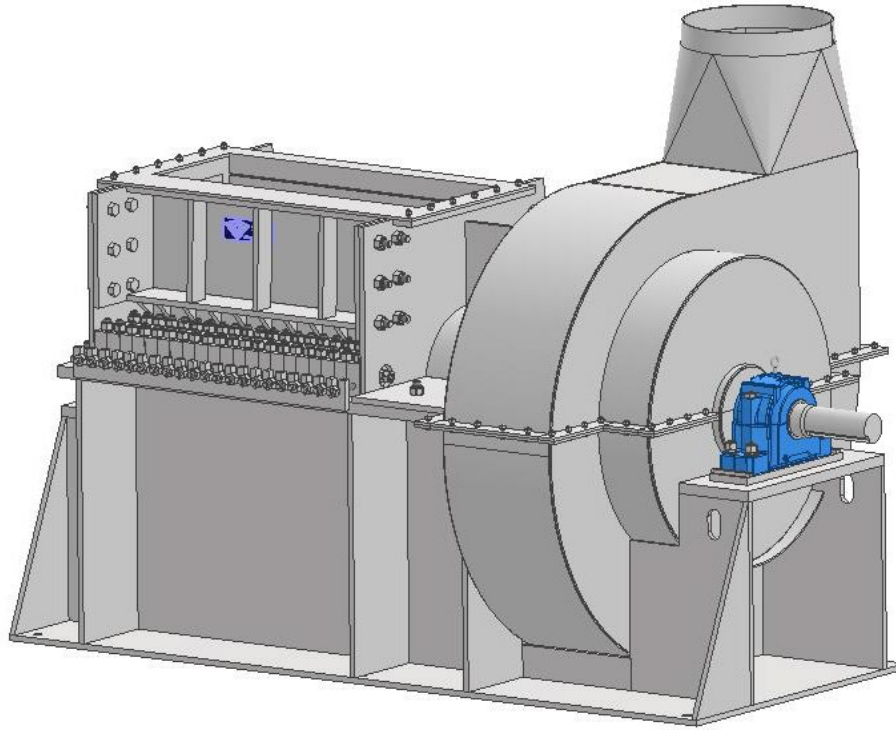
[HOG DIMENSIONS IN INCHES - CONTINUED]

MODEL	BEARING SIZE	"D"	"E"	"G"	"P" (RANGE)	"Y"
18PM40	4-7/16	59	26-7/8	32-1/8	13 – 17	29-5/8
18PM50	4-7/16	73-1/4	33-1/4	40	18 – 21	37-1/2
26PM40	4-7/16	59	26-7/8	32-1/8	13 – 17	29-5/8
26PM50	4-7/16	73-1/4	33-1/4	40	18 – 21	37-1/2
26PM60	5-7/16	85	38-5/8	46-3/8	22 – 25	43-7/8
34PM40	4-7/16	59	26-7/8	32-1/8	13 – 17	29-5/8
	5-7/16					
34PM50	4-7/16	73-1/4	33-1/4	40	18 – 21	37-1/2
	5-7/16					
34PM60	5-7/16	85	38-5/8	46-3/8	22 – 25	43-7/8
42PM40	4-7/16	59	26-7/8	32-1/8	13 – 17	29-5/8
	5-7/16					
42PM50	4-7/16	73-1/4	33-1/4	40	18 – 21	37-1/2
	5-7/16					
42PM60	5-7/16	85	38-5/8	46-3/8	22 – 25	43-7/8
50PM40	5-7/16	59	26-7/8	32-1/8	13 – 17	29-5/8
50PM50	5-7/16	73-1/4	33-1/4	40	18 – 21	37-1/2
50PM60	5-7/16	85	38-5/8	46-3/8	22 – 25	43-7/8
58PM50	5-7/16	73-1/4	33-1/4	40	18 – 21	37-1/2
66PM50	5-7/16	73-1/4	33-1/4	40	18 – 21	37-1/2



PM-BH DIMENSION SHEET

DS 24-04-24



[HOG WEIGHT AND ROTOR INERTIA]

MODEL	BEARING SIZE	WEIGHT (LBS)	WR ² (#FT ²)
18PM40	4-7/16	10200	2021
18PM50	4-7/16	11300	3105
26PM40	4-7/16	11850	2802
26PM50	4-7/16	12300	3235
26PM60	5-7/16	13600	5105
34PM40	4-7/16	12850	2933
	5-7/16	13050	2937
34PM50	4-7/16	13300	3366
	5-7/16	13500	3370
34PM60	5-7/16	14600	5250
42PM40	4-7/16	13850	3064
	5-7/16	14050	3067
42PM50	4-7/16	14300	3497
	5-7/16	14500	3501
42PM60	5-7/16	15600	5395
50PM40	5-7/16	15050	3199
50PM50	5-7/16	15500	3632
50PM60	5-7/16	16600	5540
58PM50	5-7/16	16500	3763
66PM50	5-7/16	17500	3894