



PM Model Eat-Rite Hog

Dimension Sheet

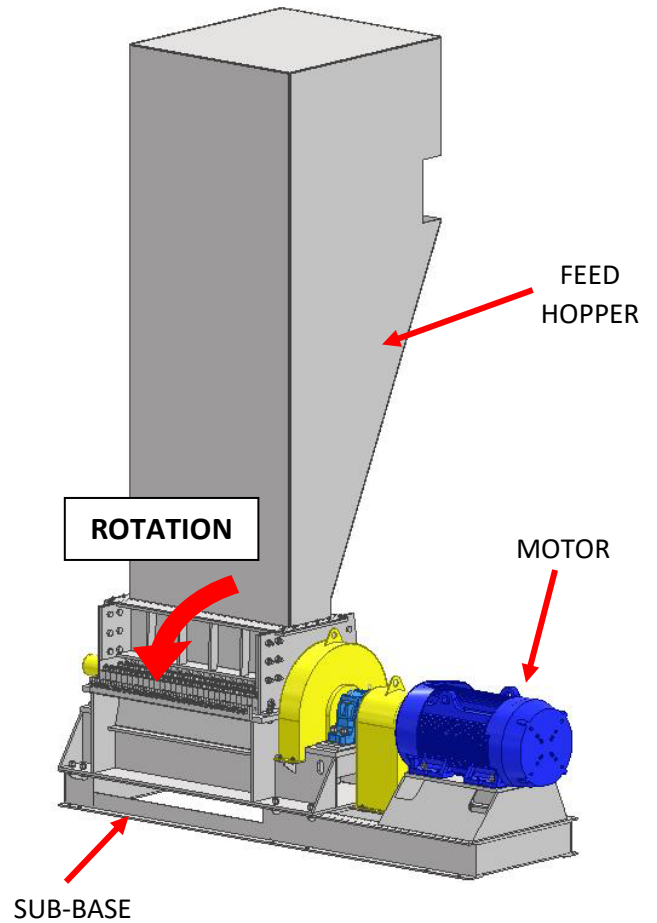
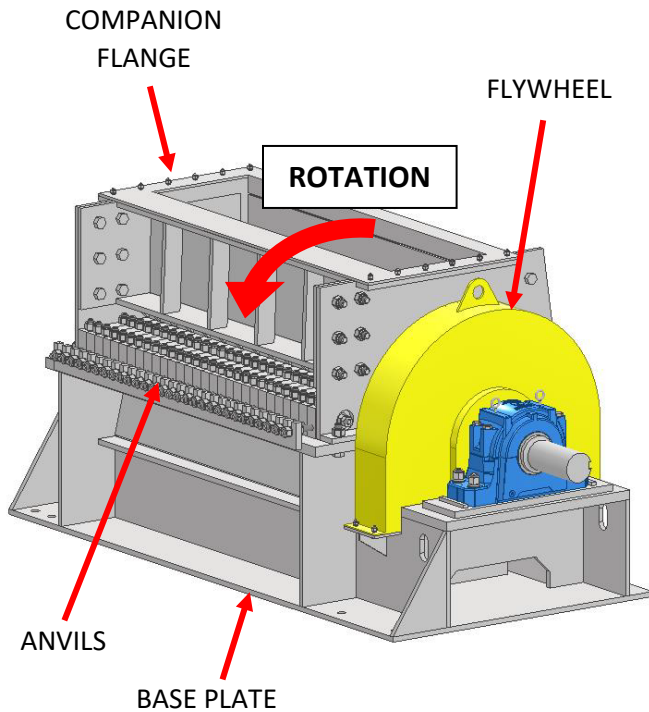
DS 24-03-24

2017 Thelma Street | P.O. Box 3687
Jacksonville, Florida 32206 U.S.A.
Phone: (904) 355-5671
www.montgomeryindustries.com



PM-ER DIMENSION SHEET

DS 24-03-24



[GENERAL NOTES]

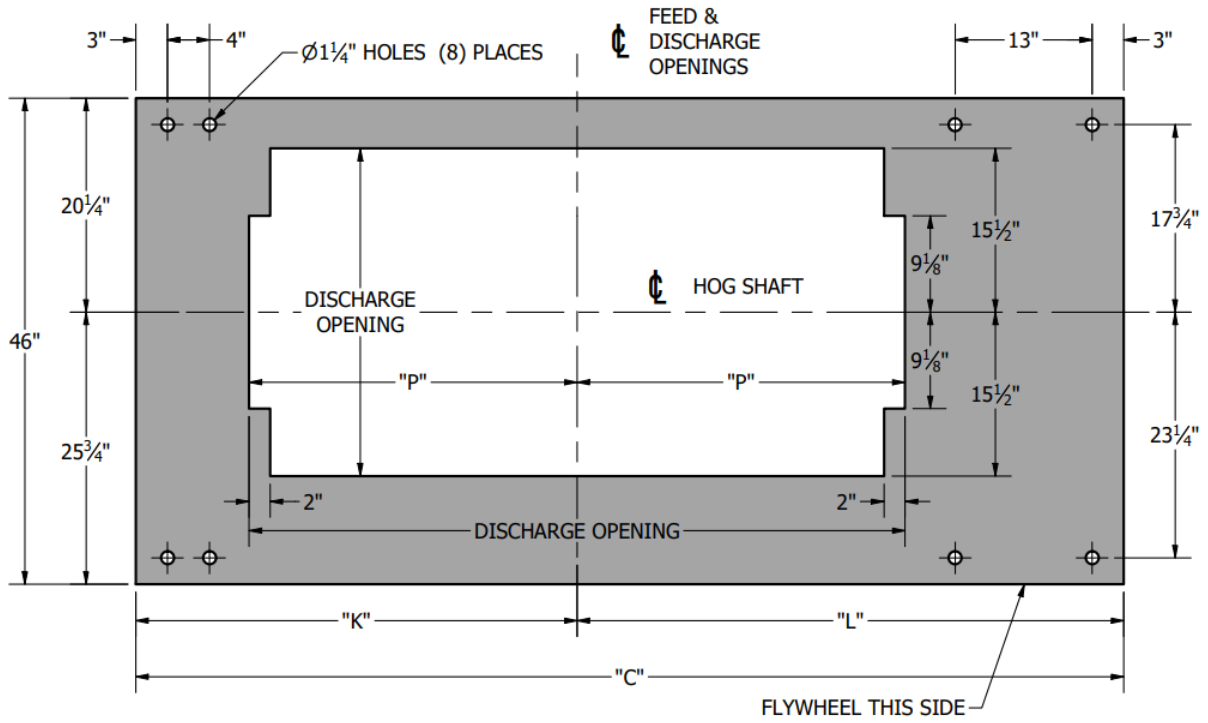
1. **DO NOT FEED AGAINST ROTATION.** FEED MAY BE ANY OF THE OTHER THREE DIRECTIONS.
2. THE HOG MUST BE MOUNTED WITH THE BASE PLATE HORIZONTAL. DO NOT MOUNT THE HOG ON AN ANGLE TO FACILITATE FEEDING. FOUNDATIONS MUST BE SMOOTH, CLEAN, AND LEVEL. **THE UNIT MUST BE SHIMMED PRIOR TO TIGHTENING.** THE UNIT CAN BOW AND BIND, CAUSING EXCESSIVE STRESS IF ANCHORING ALTERS THE INHERENT CONTOUR OF THE BASE PLATE.
3. A REINFORCED CONCRETE FOUNDATION SHOULD EXTEND AT LEAST 6" BEYOND THE HOG ON ALL SIDES. THE MINIMUM THICKNESS IS 12". SEE *BULLETIN 57-06-22 FOUNDATION PREPARATION* FOR MORE INFORMATION.
4. ALL DIMENSIONS SHOWN ARE STANDARD AND MAY VARY WITH INSTALLATIONS.
5. THE HOG CAN BE BUILT OPPOSITE HAND FROM THAT SHOWN. THE FLYWHEEL CAN BE MOUNTED ON THE OPPOSITE END IF REQUESTED BEFORE MANUFACTURING HAS STARTED.
6. TO CONTAIN KICKBACK, THE HOPPER SHOULD BE DESIGNED SO THAT THERE IS A MINIMUM OF 60" FROM THE TOP OF THE FEED CONVEYOR BELT TO THE COMPANION FLANGE ON THE UPPER HOUSING.
7. FEED OPENING "F" VARIES WITH APPLICATION. TYPICALLY, "F" IS EITHER 17" OR 21".
8. ALLOW 36" CLEARANCE AROUND THE MACHINE FOR MAINTENANCE.
9. THERE ARE EIGHT (8) 1-1/4" DIAMETER HOLES FOR SECURING TO THE FOUNDATION. FOUNDATION ANCHOR BOLTS TO BE 1" N.C., EXTENDING 3" ABOVE THE REINFORCED CONCRETE FOUNDATION. SEE *BULLETIN 57-06-22 FOUNDATION PREPARATION* FOR MORE INFORMATION.
10. IF THE HOG IS TO BE MOUNTED ON STEEL COLUMNS, THE SUPPORTING STRUCTURE SHOULD BE DESIGNED FOR 2-1/2 TIMES THE STATIC LOAD FOR SAFETY.



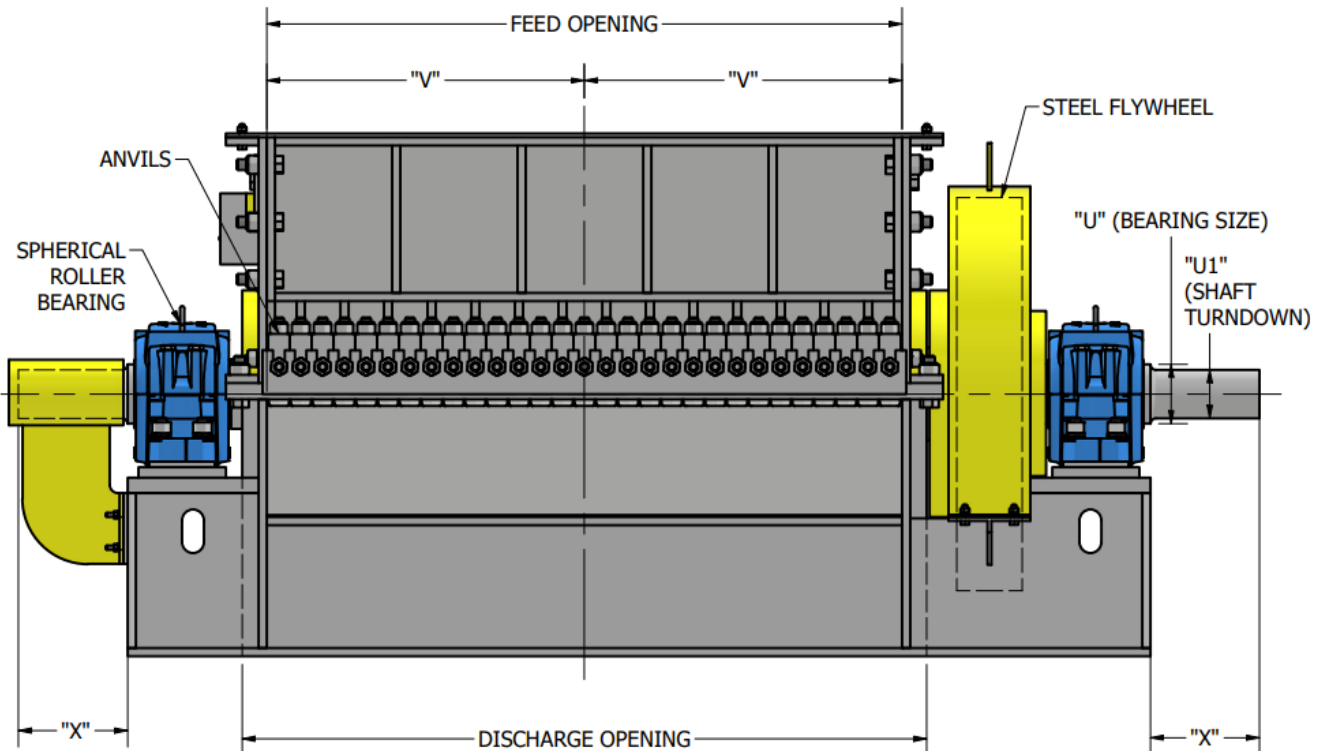
PM-ER DIMENSION SHEET

DS 24-03-24

PLAN VIEW - BASE PLATE ONLY



FRONT ELEVATION



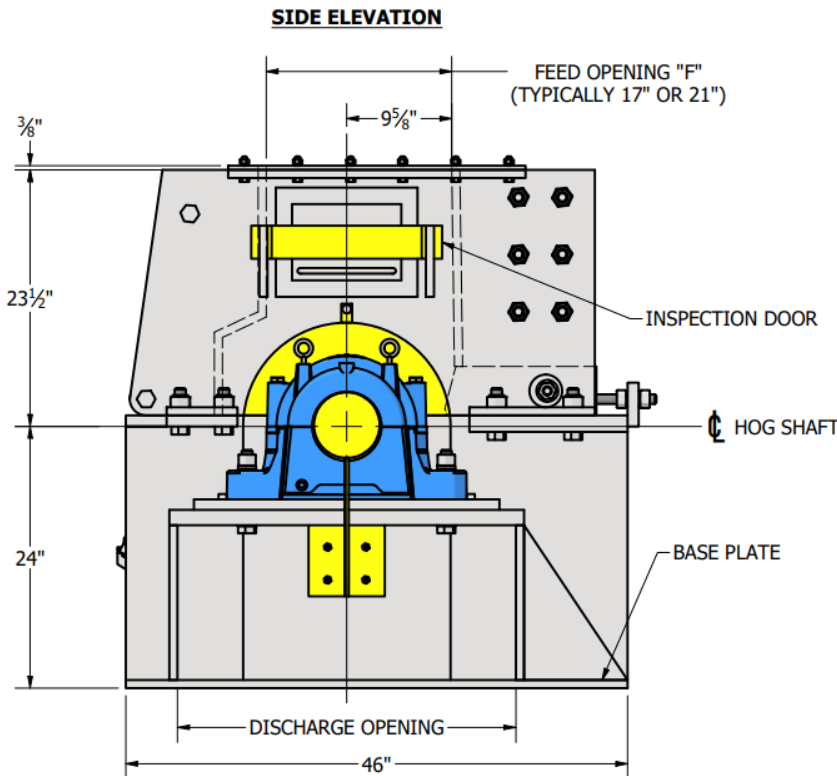


PM-ER DIMENSION SHEET

DS 24-03-24

[HOG DIMENSIONS IN INCHES]

MODEL	BEARING SIZE "U"	STANDARD FLYWHEEL	"C"	"K"	"L"	"P"	"U1"	"V"	"X"	DRIVE KEYWAY
18 PM	4-7/16	4 X 36	51-3/4	20-7/8	30-7/8	11-1/8	3-15/16	9-1/8	8	1 X 1/2 X 7-1/2
	5-7/16	6 X 36	53-3/4	21-7/8	31-7/8		4-7/16		10	1 X 1/2 X 9-1/2
26 PM	4-7/16	4 X 36	59-3/4	24-7/8	34-7/8	15-1/8	3-15/16	13-1/8	8	1 X 1/2 X 7-1/2
	5-7/16	6 X 36	61-3/4	25-7/8	35-7/8		4-7/16		10	1 X 1/2 X 9-1/2
34 PM	4-7/16	6 X 36	67-3/4	28-7/8	38-7/8	19-1/8	3-15/16	17-1/8	8	1 X 1/2 X 7-1/2
	5-7/16		69-3/4	29-7/8	39-7/8		4-7/16		10	1 X 1/2 X 9-1/2
42 PM	4-7/16	6 X 36	75-3/4	32-7/8	42-7/8	23-1/8	3-15/16	21-1/8	8	1 X 1/2 X 7-1/2
	5-7/16		77-3/4	33-7/8	43-7/8		4-7/16		10	1 X 1/2 X 9-1/2
50 PM	4-7/16	6 X 36	83-3/4	36-7/8	46-7/8	27-1/8	3-15/16	25-1/8	8	1 X 1/2 X 7-1/2
	5-7/16		85-3/4	37-7/8	47-7/8		4-7/16		10	1 X 1/2 X 9-1/2
58 PM	4-7/16	6 X 36	91-3/4	40-7/8	50-7/8	31-1/8	3-15/16	29-1/8	8	1 X 1/2 X 7-1/2
	5-7/16		93-3/4	41-7/8	51-7/8		4-7/16		10	1 X 1/2 X 9-1/2
66 PM	4-7/16	6 X 36	99-3/4	44-7/8	54-7/8	35-1/8	3-15/16	33-1/8	8	1 X 1/2 X 7-1/2
	5-7/16		101-3/4	45-7/8	55-7/8		4-7/16		10	1 X 1/2 X 9-1/2



[HOG WEIGHT AND ROTOR INERTIA]

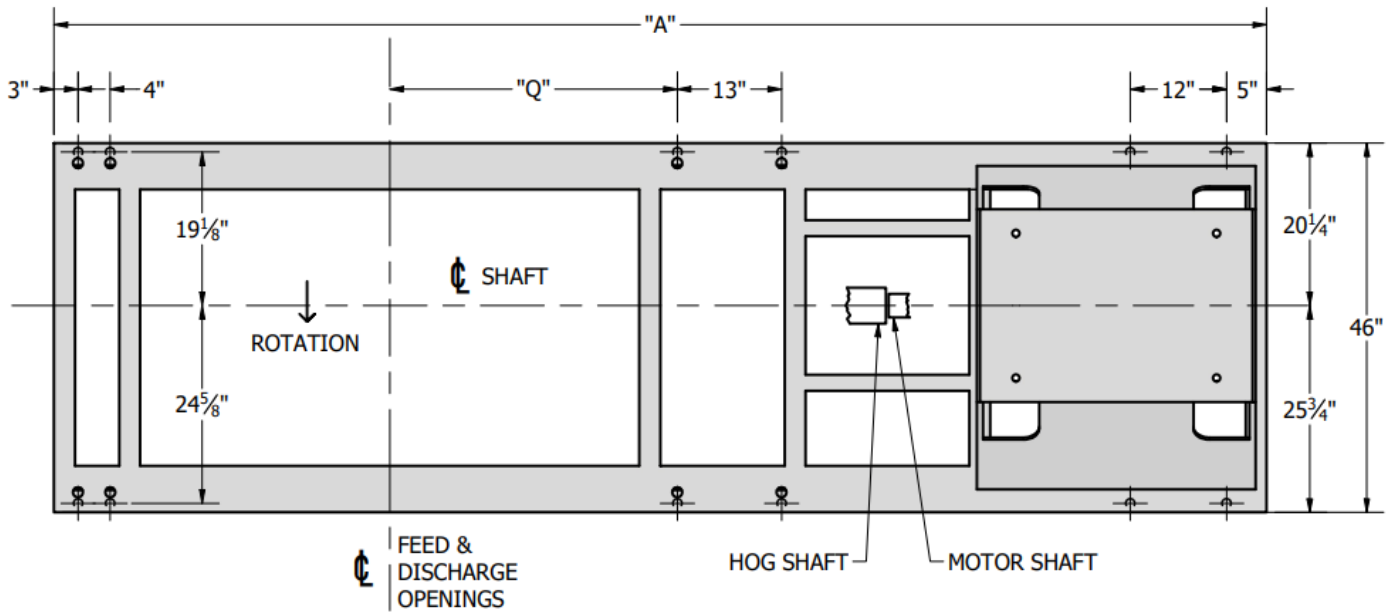
MODEL	BEARING SIZE	WEIGHT (LBS)	WR ² (#FT ²)
18 PM	4-7/16"	6900	1620
	5-7/16"	7600	2269
26 PM	4-7/16"	8100	1765
	5-7/16"	8800	2415
34 PM	4-7/16"	9550	2560
	5-7/16"	10000	
42 PM	4-7/16"	10700	2705
	5-7/16"	11200	
50 PM	4-7/16"	11950	2851
	5-7/16"	12400	
58 PM	4-7/16"	13150	2996
	5-7/16"	13600	
66 PM	4-7/16"	14350	3141
	5-7/16"	14800	



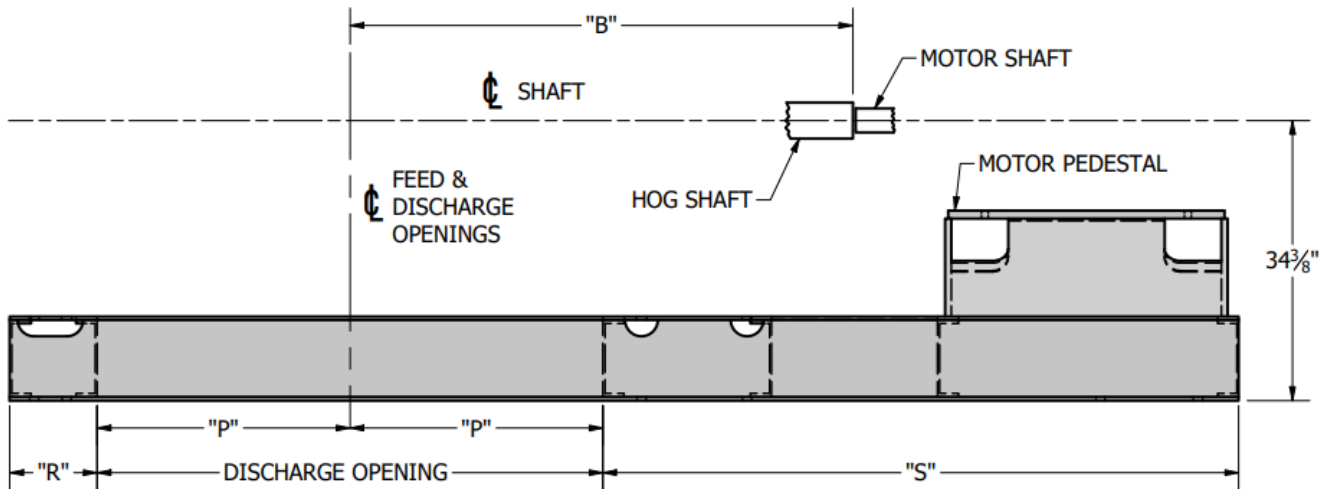
PM-ER DIMENSION SHEET

DS 24-03-24

SUB-BASE OVERHEAD VIEW



SUB-BASE FRONT ELEVATION

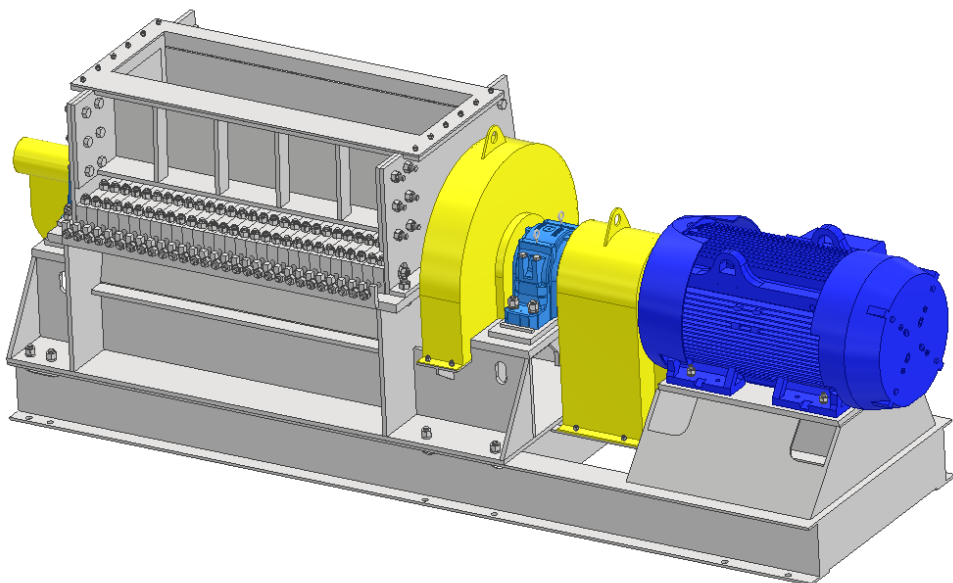




PM-ER DIMENSION SHEET

DS 24-03-24

[SUB-BASE WEIGHT]



MODEL	WEIGHT (LBS)
18 PM	1258
26 PM	1312
34 PM	1366
42 PM	1420
50 PM	1474
58 PM	1528
66 PM	1582

[SUB-BASE DIMENSIONS IN INCHES]

MODEL	BEARING SIZE	"A"	"B"	"P"	"Q"	"R"	"S"
18 PM	4-7/16"	103-1/4	38-7/8	11-1/8	14-7/8	9-3/4	71-1/4
	5-7/16"	105-1/4	41-7/8		15-7/8	10-3/4	72-1/4
26 PM	4-7/16"	111-1/4	42-7/8	15-1/8	18-7/8	9-3/4	71-1/4
	5-7/16"	113-1/4	45-7/8		19-7/8	10-3/4	72-1/4
34 PM	4-7/16"	119-1/4	46-7/8	19-1/8	22-7/8	9-3/4	71-1/4
	5-7/16"	121-1/4	49-7/8		23-7/8	10-3/4	72-1/4
42 PM	4-7/16"	127-1/4	50-7/8	23-1/8	26-7/8	9-3/4	71-1/4
	5-7/16"	129-1/4	53-7/8		27-7/8	10-3/4	72-1/4
50 PM	4-7/16"	135-1/4	54-7/8	27-1/8	30-7/8	9-3/4	71-1/4
	5-7/16"	137-1/4	57-7/8		31-7/8	10-3/4	72-1/4
58 PM	4-7/16"	143-1/4	58-7/8	31-1/8	34-7/8	9-3/4	71-1/4
	5-7/16"	145-1/4	61-7/8		35-7/8	10-3/4	72-1/4
66 PM	4-7/16"	151-1/4	62-7/8	35-1/8	38-7/8	9-3/4	71-1/4
	5-7/16"	153-1/4	65-7/8		39-7/8	10-3/4	72-1/4