



HD Model Eat-Rite Hog

Dimension Sheet

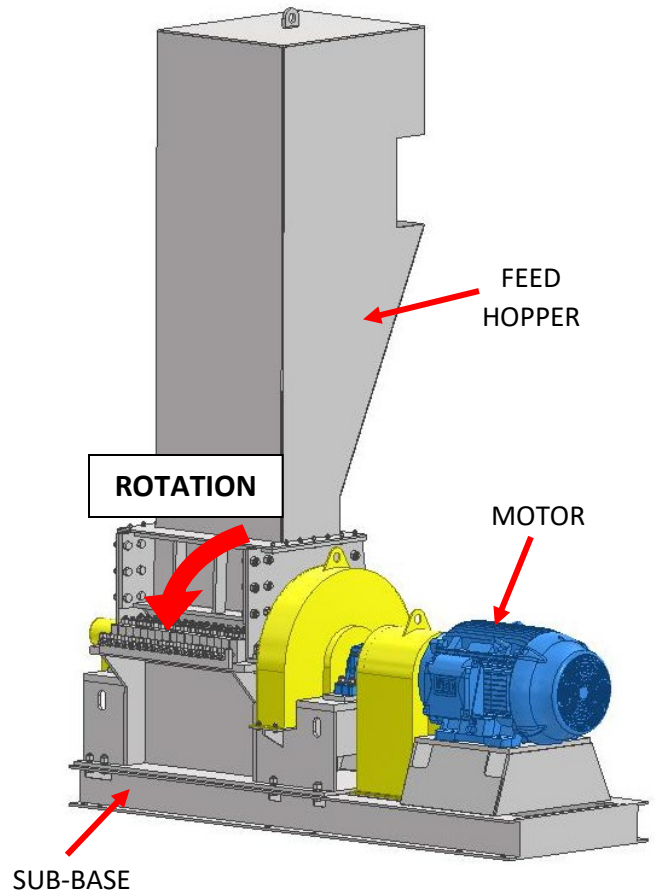
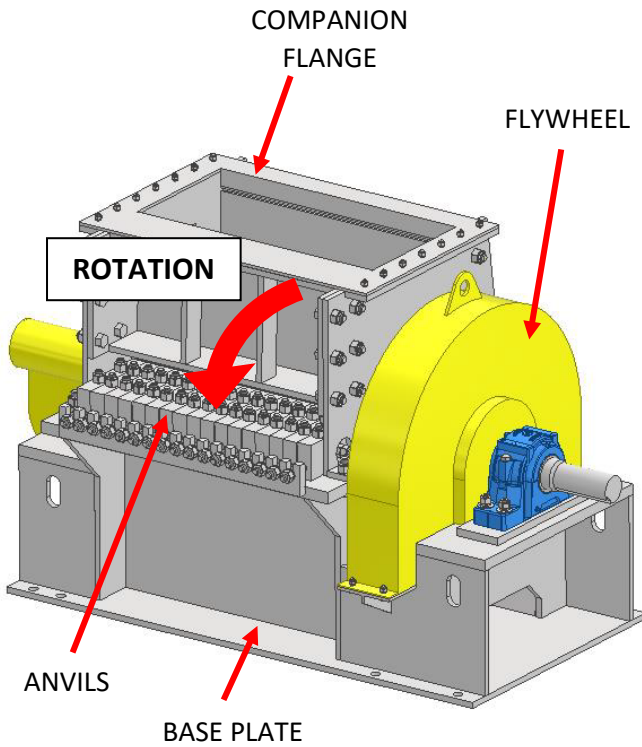
DS 24-01-24

2017 Thelma Street | P.O. Box 3687
Jacksonville, Florida 32206 U.S.A.
Phone: (904) 355-5671
www.montgomeryindustries.com



HD-ER DIMENSION SHEET

DS 24-01-24



[GENERAL NOTES]

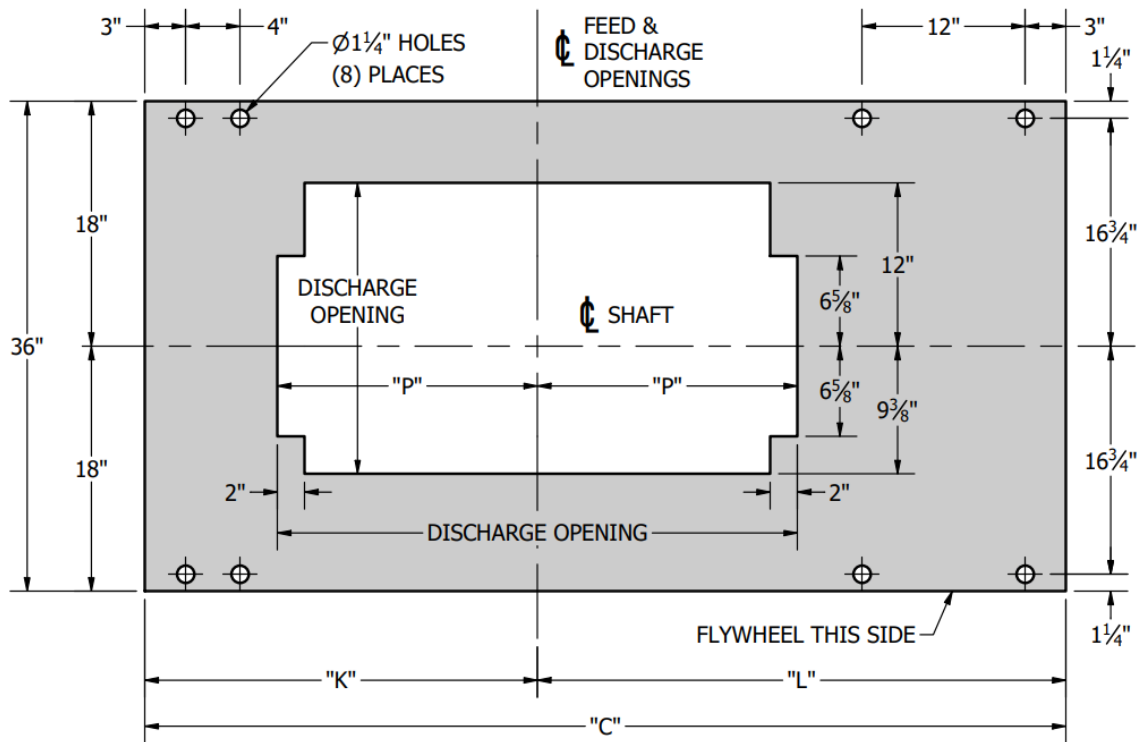
1. **DO NOT FEED AGAINST ROTATION.** FEED MAY BE ANY OF THE OTHER THREE DIRECTIONS.
2. THE HOG MUST BE MOUNTED WITH THE BASE PLATE HORIZONTAL. DO NOT MOUNT THE HOG ON AN ANGLE TO FACILITATE FEEDING. FOUNDATIONS MUST BE SMOOTH, CLEAN, AND LEVEL. **THE UNIT MUST BE SHIMMED PRIOR TO TIGHTENING.** THE UNIT CAN BOW AND BIND, CAUSING EXCESSIVE STRESS IF ANCHORING ALTERS THE INHERENT CONTOUR OF THE BASE PLATE.
3. A REINFORCED CONCRETE FOUNDATION SHOULD EXTEND AT LEAST 6" BEYOND THE HOG ON ALL SIDES. THE MINIMUM THICKNESS IS 12". SEE *BULLETIN 57-06-22 FOUNDATION PREPARATION* FOR MORE INFORMATION.
4. ALL DIMENSIONS SHOWN ARE STANDARD AND MAY VARY WITH INSTALLATIONS.
5. THE HOG CAN BE BUILT OPPOSITE HAND FROM THAT SHOWN. THE FLYWHEEL CAN BE MOUNTED ON THE OPPOSITE END IF REQUESTED BEFORE MANUFACTURING HAS STARTED.
6. TO CONTAIN KICKBACK, THE HOPPER SHOULD BE DESIGNED SO THAT THERE IS A MINIMUM OF 60" FROM THE TOP OF THE FEED CONVEYOR BELT TO THE COMPANION FLANGE ON THE UPPER HOUSING.
7. FEED OPENING "F" VARIES WITH APPLICATION. TYPICALLY, "F" IS EITHER 11-3/8", 13-3/8", OR 17-3/8".
8. ALLOW 36" CLEARANCE AROUND THE MACHINE FOR MAINTENANCE.
9. THERE ARE EIGHT (8) 1-1/4" DIAMETER HOLES FOR SECURING THE HOG TO THE FOUNDATION OR SUB-BASE. FOUNDATION ANCHOR BOLTS TO BE 1" N.C., EXTENDING 3" ABOVE THE REINFORCED CONCRETE FOUNDATION. SEE *BULLETIN 57-06-22 FOUNDATION PREPARATION* FOR MORE INFORMATION.
10. IF THE HOG IS TO BE MOUNTED ON STEEL COLUMNS, THE SUPPORTING STRUCTURE SHOULD BE DESIGNED FOR 2-1/2 TIMES THE STATIC LOAD FOR SAFETY.



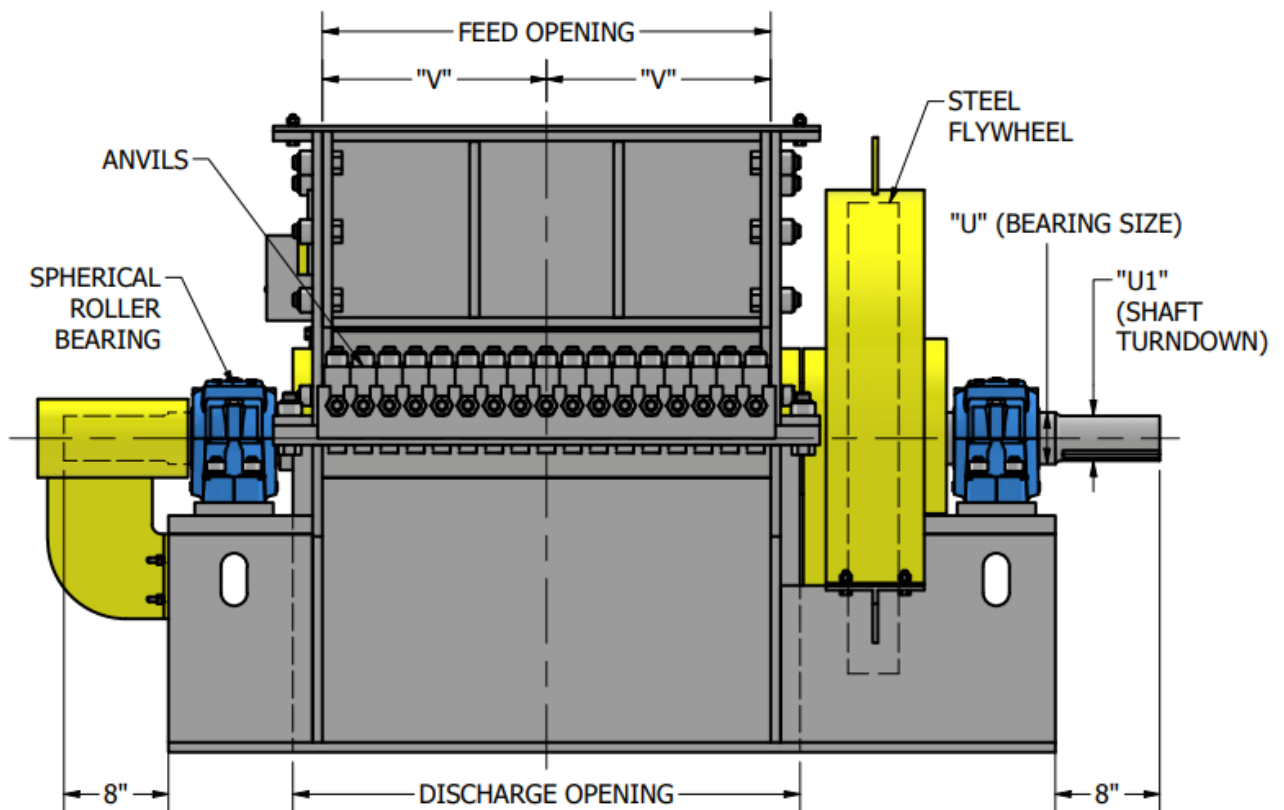
HD-ER DIMENSION SHEET

DS 24-01-24

PLAN VIEW - BASE PLATE ONLY



FRONT ELEVATION





HD-ER DIMENSION SHEET

DS 24-01-24

[HOG DIMENSIONS IN INCHES]

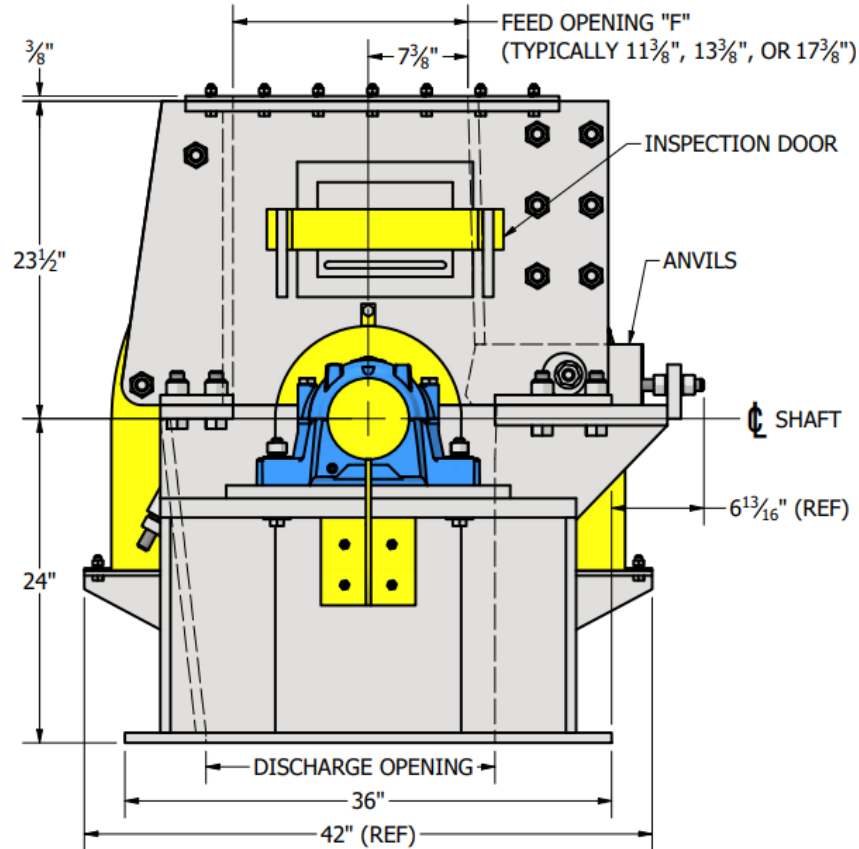
MODEL	BEARING SIZE "U"	STANDARD FLYWHEEL	"C"	"K"	"L"	"P"	"U1"	"V"	DRIVE KEYWAY
10 HD	3-15/16	4 X 36	43-3/4	16-7/8	26-7/8	7-1/8	3-7/16	5-1/8	7/8 X 7/16 X 7-7/16
	4-7/16						3-15/16		1 X 1/2 X 7-1/2
18 HD	3-15/16	4 X 36	51-3/4	20-7/8	30-7/8	11-1/8	3-7/16	9-1/8	7/8 X 7/16 X 7-7/16
	4-7/16						3-15/16		1 X 1/2 X 7-1/2
26 HD	3-15/16	4 X 36	59-3/4	24-7/8	34-7/8	15-1/8	3-7/16	13-1/8	7/8 X 7/16 X 7-7/16
	4-7/16						3-15/16		1 X 1/2 X 7-1/2
	5-7/16	6 X 36	61-3/4	25-7/8	35-7/8		4-7/16		
34 HD	3-15/16	4 X 36	67-3/4	28-7/8	38-7/8	19-1/8	3-7/16	17-1/8	7/8 X 7/16 X 7-7/16
	4-7/16	6 X 36					3-15/16		1 X 1/2 X 7-1/2
	5-7/16		69-3/4	29-7/8	39-7/8		4-7/16		
42 HD	3-15/16	4 X 36	75-3/4	32-7/8	42-7/8	23-1/8	3-7/16	21-1/8	7/8 X 7/16 X 7-7/16
	4-7/16	6 X 36					3-15/16		1 X 1/2 X 7-1/2
	5-7/16		77-3/4	33-7/8	43-7/8		4-7/16		
50 HD	3-15/16	4 X 36	83-3/4	36-7/8	46-7/8	27-1/8	3-7/16	25-1/8	7/8 X 7/16 X 7-7/16
	4-7/16	6 X 36					3-15/16		1 X 1/2 X 7-1/2
	5-7/16		85-3/4	37-7/8	47-7/8		4-7/16		
58 HD	3-15/16	4 X 36	91-3/4	40-7/8	50-7/8	31-1/8	3-7/16	29-1/8	7/8 X 7/16 X 7-7/16
	4-7/16	6 X 36					3-15/16		1 X 1/2 X 7-1/2
	5-7/16		93-3/4	41-7/8	51-7/8		4-7/16		



HD-ER DIMENSION SHEET

DS 24-01-24

SIDE ELEVATION



[HOG WEIGHT AND ROTOR INERTIA]

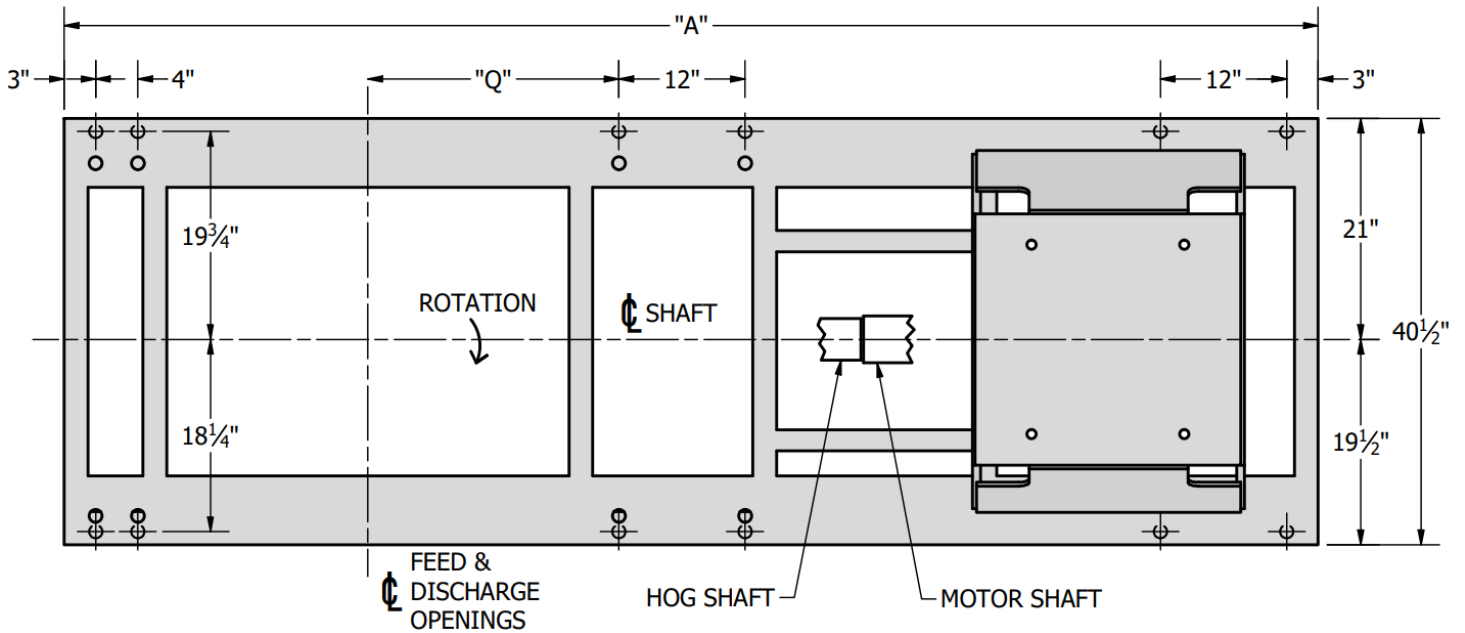
MODEL	BEARING SIZE	WEIGHT (LBS)	WR ² (#FT ²)
10 HD	3-15/16"	5000	1377
	4-7/16"	5100	
18 HD	3-15/16"	5800	1439
	4-7/16"	5900	
26 HD	3-15/16"	6600	1501
	4-7/16"	6700	
	5-7/16"	7350	2150
34 HD	3-15/16"	7400	1563
	4-7/16"	7950	2212
	5-7/16"	8150	
42 HD	3-15/16"	8200	1625
	4-7/16"	8750	2274
	5-7/16"	8950	
50 HD	3-15/16"	9000	1687
	4-7/16"	9550	2336
	5-7/16"	9750	
58 HD	3-15/16"	9800	1748
	4-7/16"	10350	2397
	5-7/16"	10550	



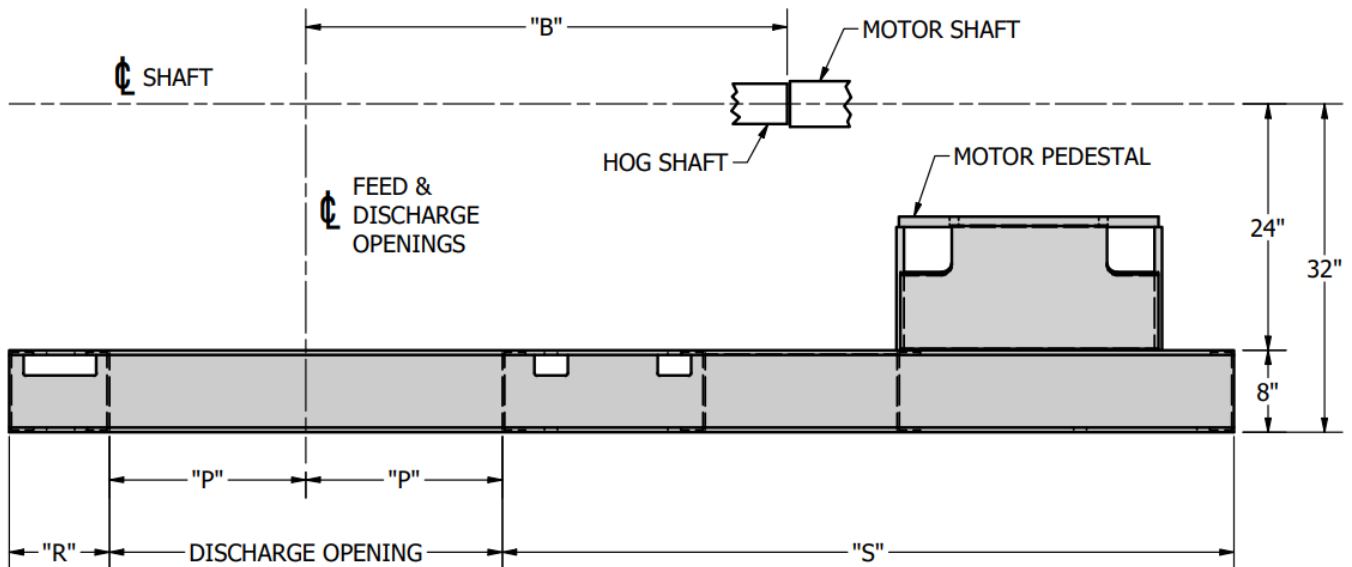
HD-ER DIMENSION SHEET

DS 24-01-24

SUB-BASE OVERHEAD VIEW



SUB-BASE FRONT ELEVATION

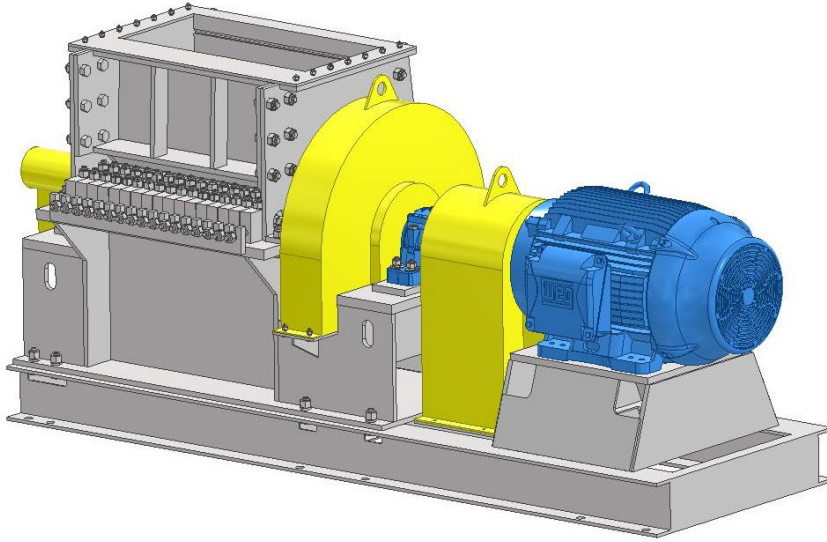




HD-ER DIMENSION SHEET

DS 24-01-24

[SUB-BASE WEIGHT]



MODEL	WEIGHT (LBS)
10 HD	1173
18 HD	1226
26 HD	1279
34 HD	1332
42 HD	1385
50 HD	1438
58 HD	1491

[SUB-BASE DIMENSIONS IN INCHES]

MODEL	BEARING SIZE	"A"	"B"	"P"	"Q"	"R"	"S"
10 HD	3-15/16	95-1/4	34-7/8	7-1/8	11-7/8	9-3/4	71-1/4
	4-7/16						
18 HD	3-15/16	103-1/4	38-7/8	11-1/8	15-7/8	9-3/4	71-1/4
	4-7/16						
26 HD	3-15/16	111-1/4	42-7/8	15-1/8	19-7/8	9-3/4	71-1/4
	4-7/16				20-7/8		
	5-7/16				10-3/4		
34 HD	3-15/16	119-1/4	46-7/8	19-1/8	23-7/8	9-3/4	71-1/4
	4-7/16				24-7/8		
	5-7/16				10-3/4		
42 HD	3-15/16	127-1/4	50-7/8	23-1/8	27-7/8	9-3/4	71-1/4
	4-7/16				28-7/8		
	5-7/16				10-3/4		
50 HD	3-15/16	135-1/4	54-7/8	27-1/8	31-7/8	9-3/4	71-1/4
	4-7/16				32-7/8		
	5-7/16				10-3/4		
58 HD	3-15/16	143-1/4	58-7/8	31-1/8	35-7/8	9-3/4	71-1/4
	4-7/16				36-7/8		
	5-7/16				10-3/4		