

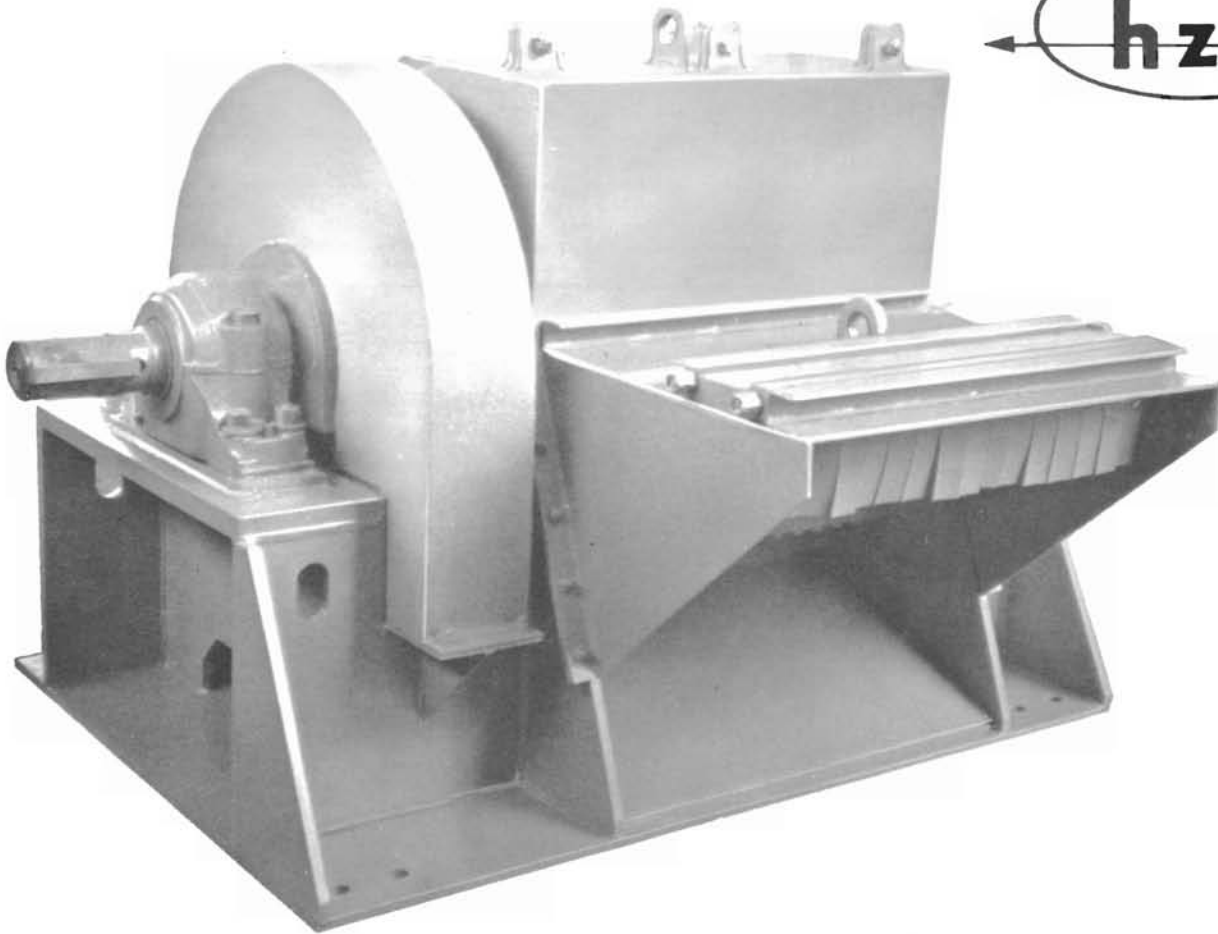
MONTGOMERY

PM Model EAT-RITE HOG

Horizontal Feed — Rear Discharge

DIMENSION SHEET

DS 24-20-97



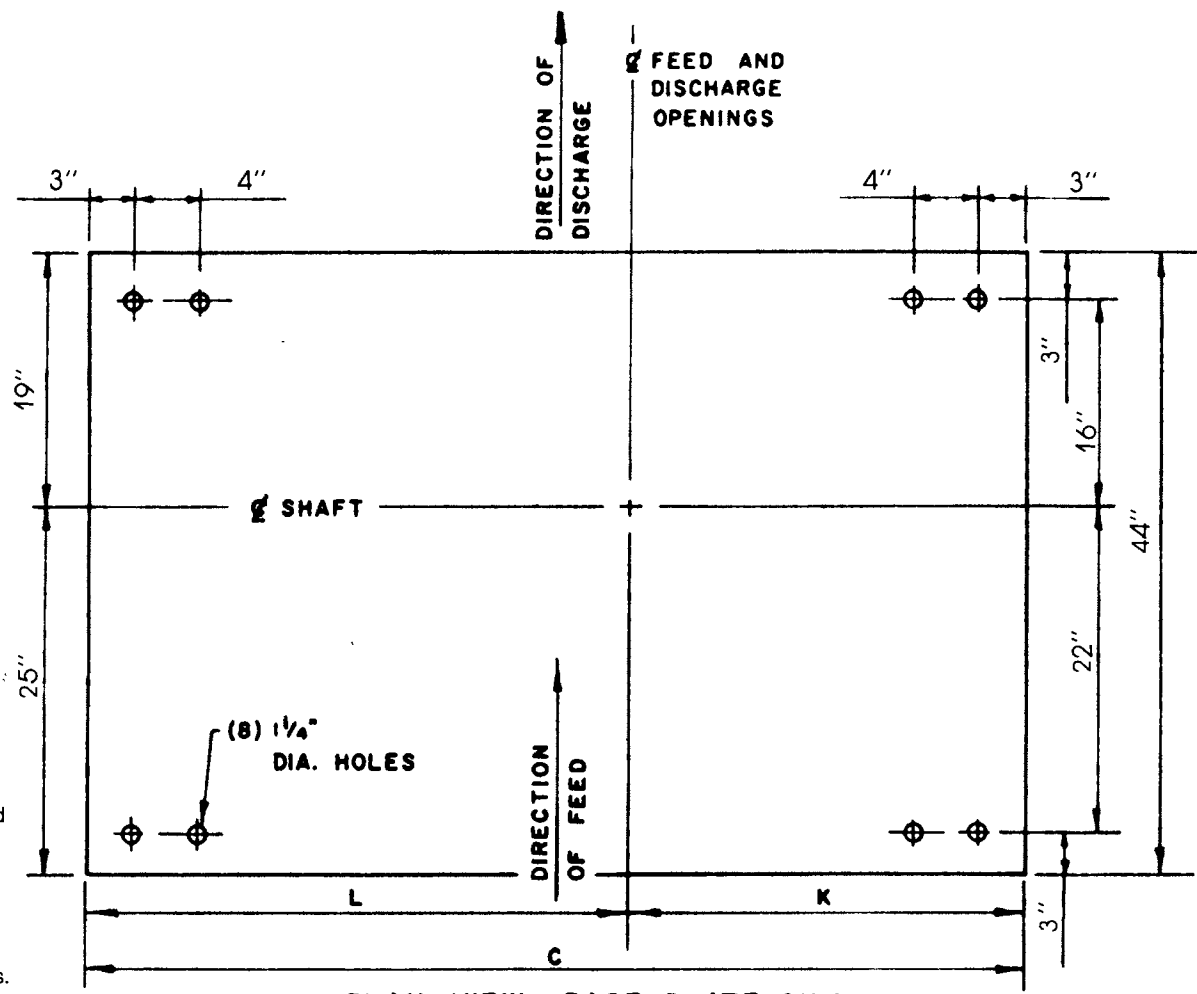
MONTGOMERY INDUSTRIES INTERNATIONAL, INC.

P.O. Box 3687 • 2017 Thelma St.
JACKSONVILLE, FLORIDA U.S.A. 32206
Phone (904) 355-5671 • FAX (904) 355-0401

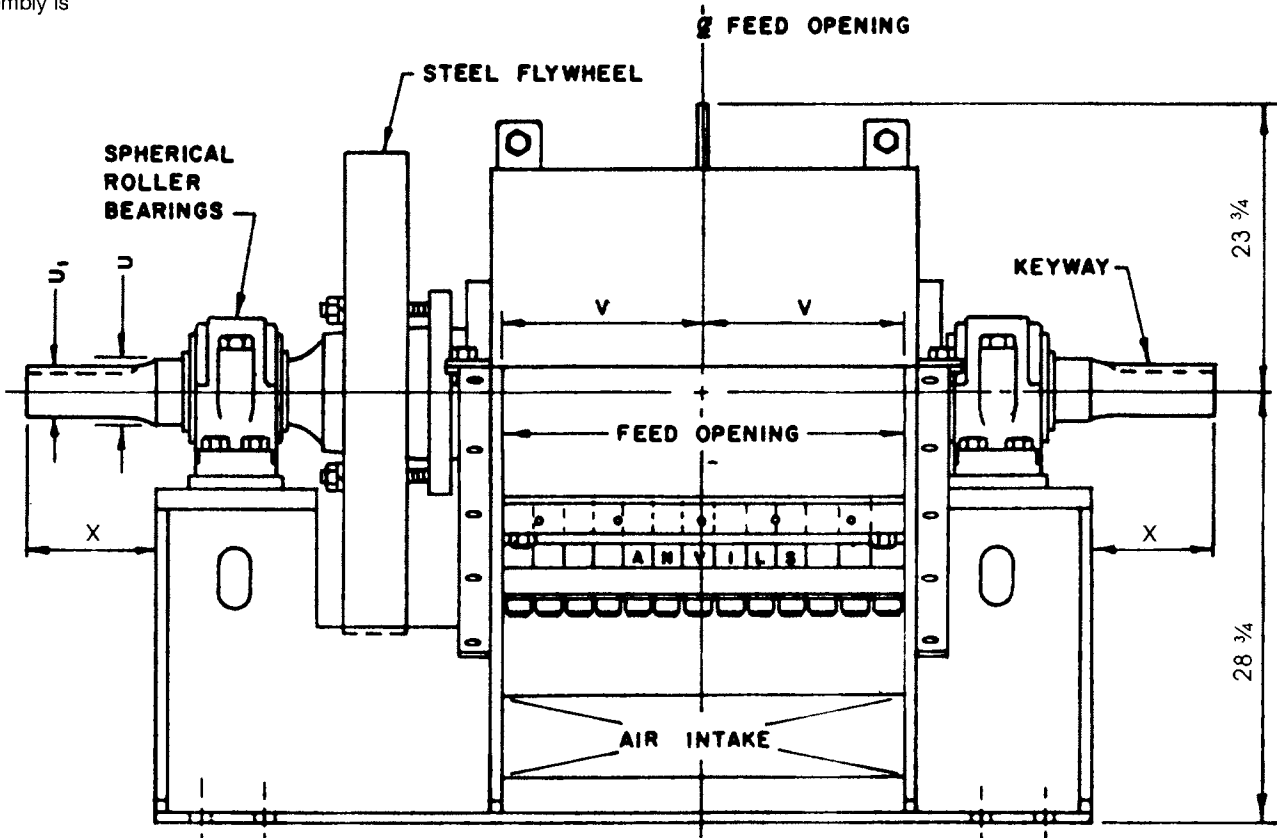
Since 1925 - Solving Difficult Problems for Industry

GENERAL NOTES

1. Hog must be mounted with base horizontal. Do not mount hog on an angle to facilitate feeding!
2. Use a reinforced concrete foundation 12" minimum thickness, to extend 6" beyond hog base on all sides. In cold climates the depth will be determined by the frost line.
3. Allow 36" clearance all around machine for maintenance.
4. During normal operation there is very little impact or vibration load transmitted to the base of the Machine. However, if Hog is to be mounted on steel columns, the supporting structure should be designed for two and one half times the static load for safety.
5. All dimensions shown are standard and may vary with special installations.
6. Hog can be built opposite hand from that shown. Flywheel can be mounted either end if requested before assembly is started.



PLAN VIEW - BASE PLATE ONLY

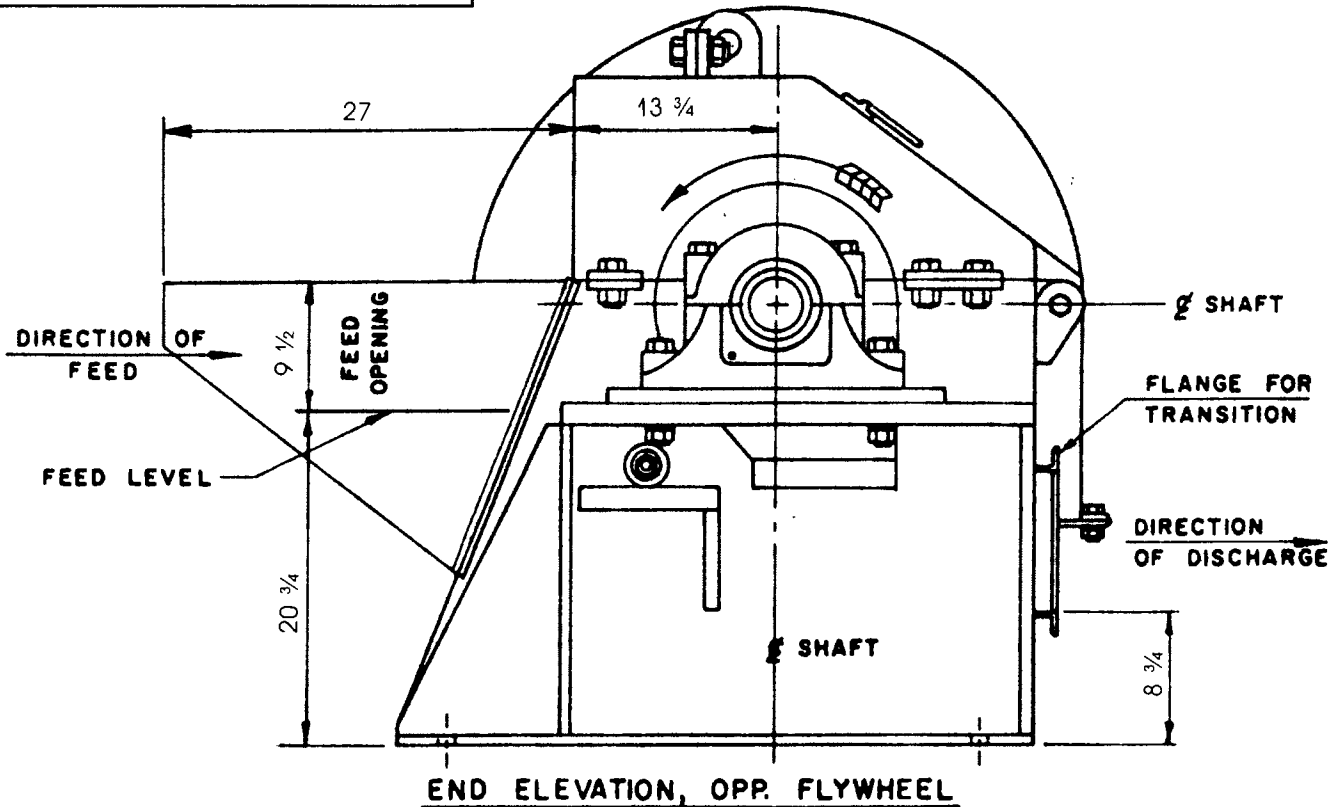


FRONT ELEVATION

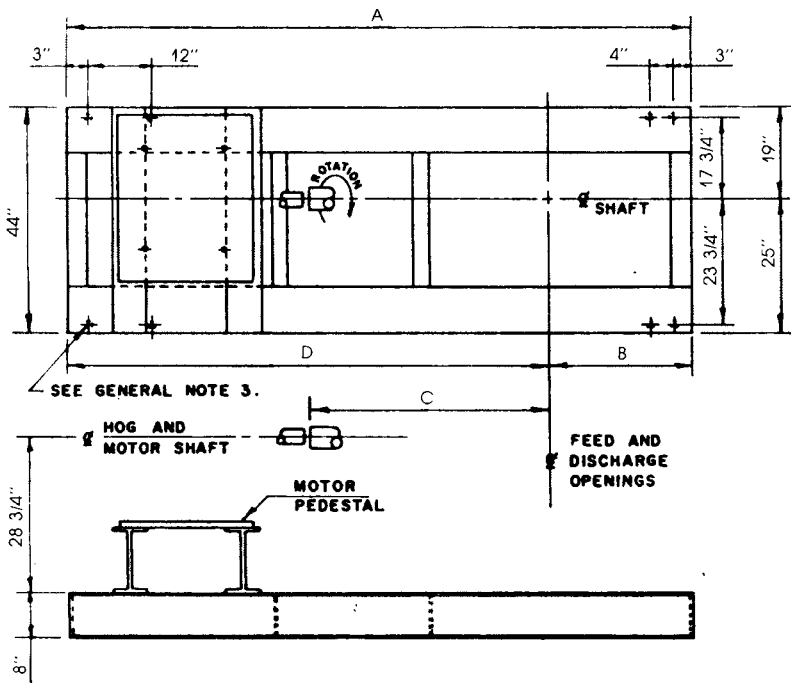
DIMENSIONS IN INCHES

MODEL	BEARING SIZE	STANDARD FLYWHEEL	C	K	L	U	U ₁	V	X	KEYWAY	WEIGHT #	WR ¹ #FT ¹
18 PM-HZF	4 7/16	4 x 36	51 3/4	20 7/8	30 7/8	4 7/16	3 15/16	9 1/8	8	1 x 1/2 x 7 1/2	7,135	1620
"	5 7/16	6 x 36	53 3/4	21 7/8	31 7/8	5 7/16	4 7/16	"	10	1 x 1/2 x 9 1/2	7,686	2269
26 PM-HZF	4 7/16	4 x 36	59 3/4	24 7/8	34 7/8	4 7/16	3 15/16	13 1/8	8	1 x 1/2 x 7 1/2	8,162	1765
"	5 7/16	6 x 36	61 3/4	25 7/8	35 7/8	5 7/16	4 7/16	"	10	1 x 1/2 x 9 1/2	8,713	2415
34 PM-HZF	4 7/16	"	67 3/4	28 7/8	38 7/8	4 7/16	3 15/16	17 1/8	8	1 x 1/2 x 7 1/2	9,721	2560
"	5 7/16	"	69 3/4	29 7/8	39 7/8	5 7/16	4 7/16	"	10	1 x 1/2 x 9 1/2	9,841	"
42 PM-HZF	4 7/16	"	75 3/4	32 7/8	42 7/8	4 7/16	3 15/16	21 1/8	8	1 x 1/2 x 7 1/2	10,732	2705
"	5 7/16	"	77 3/4	33 7/8	43 7/8	5 7/16	4 7/16	"	10	1 x 1/2 x 9 1/2	10,852	"
50 PM-HZF	4 7/16	"	83 3/4	36 7/8	46 7/8	4 7/16	3 15/16	25 1/8	8	1 x 1/2 x 7 1/2	11,751	2851
"	5 7/16	"	85 3/4	37 7/8	47 7/8	5 7/16	4 7/16	"	10	1 x 1/2 x 9 1/2	11,871	"
58 PM-HZF	4 7/16	"	91 3/4	40 7/8	50 7/8	4 7/16	3 15/16	29 1/8	8	1 x 1/2 x 7 1/2	12,766	2996
"	5 7/16	"	93 3/4	41 7/8	51 7/8	5 7/16	4 7/16	"	10	1 x 1/2 x 9 1/2	12,886	"
66 PM-HZF	4 7/16	"	99 3/4	44 7/8	54 7/8	4 7/16	3 15/16	33 1/8	8	1 x 1/2 x 7 1/2	13,787	3141
"	5 7/16	"	101 3/4	45 7/8	55 7/8	5 7/16	4 7/16	"	10	1 x 1/2 x 9 1/2	13,907	"

Montgomery Industries International reserves the right to change its designs and any dimensions or materials specified herein are subject to change without prior notice. Dimensions are for reference only. Use certified setting plan for construction. Install only with factory approval and follow all safety requirements.



SUB - BASE



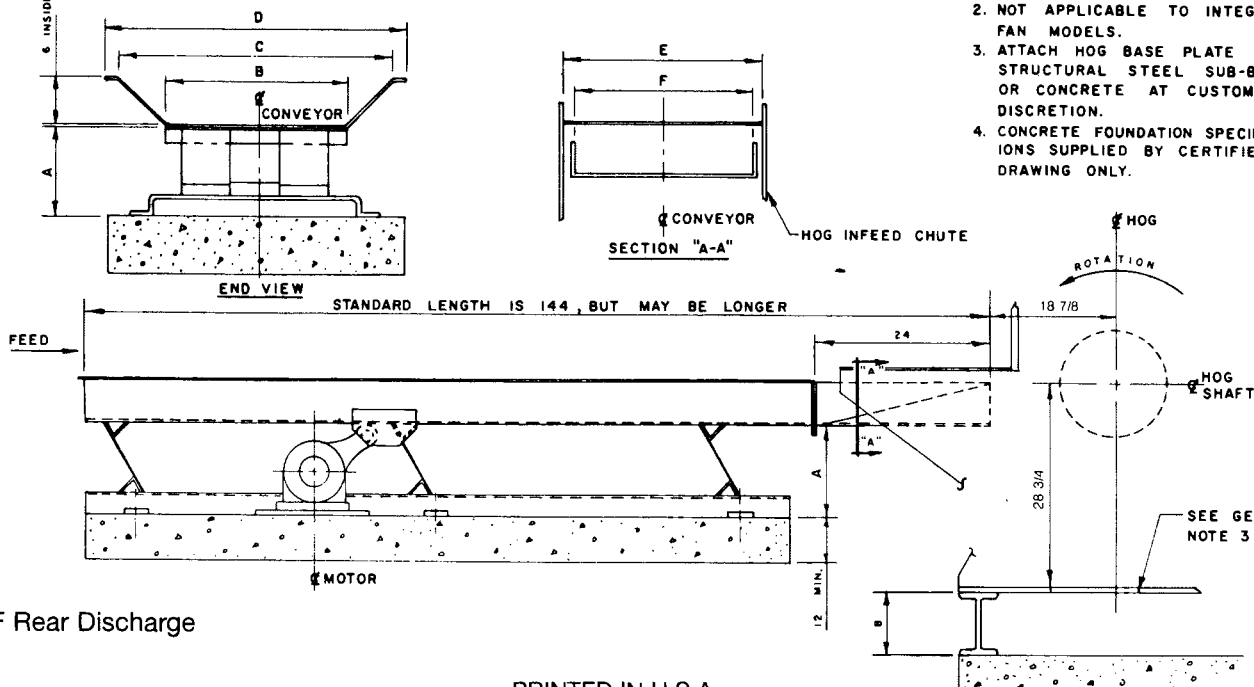
MODEL	BEARING SIZE	A	B	C	D	WT. LBS.
18 PM-HZF	4 7/16	103 1/4	20 7/8	38 7/8	82 3/8	1,102
"	5 7/16	107 1/4	21 7/8	41 7/8	85 3/8	1,112
26 PM-HZF	4 7/16	111 1/4	24 7/8	42 7/8	86 3/8	1,142
"	5 7/16	115 1/4	25 7/8	45 7/8	89 3/8	1,149
34 PM-HZF	4 7/16	119 1/4	28 7/8	46 7/8	90 3/8	1,177
"	5 7/16	123 1/4	29 7/8	49 7/8	93 3/8	1,186
42 PM-HZF	4 7/16	127 1/4	32 7/8	50 7/8	94 3/8	1,214
"	5 7/16	131 1/4	33 7/8	53 7/8	97 3/8	1,224
50 PM-HZF	4 7/16	135 1/4	36 7/8	54 7/8	98 3/8	1,252
"	5 7/16	139 1/4	37 7/8	57 7/8	101 3/8	1,261
58 PM-HZF	4 7/16	143 1/4	40 7/8	58 7/8	102 3/8	1,289
"	5 7/16	147 1/4	41 7/8	61 7/8	105 3/8	1,298
66 PM-HZF	4 7/16	151 1/4	44 7/8	62 7/8	106 3/8	1,326
"	5 7/16	155 1/4	45 7/8	65 7/8	109 3/8	1,336

GENERAL NOTES

1. ALLOW A MINIMUM OF 36" CLEARANCE ALL AROUND FOR MAINTENANCE.
2. MOTOR CAN BE MOUNTED ON THE OPPOSITE END FROM THAT SHOWN.
3. (8) 1 1/4" DIA. HOLES FOR 1" N.C. ANCHOR BOLTS. BOLTS TO EXTEND 3" ABOVE A MINIMUM OF 12" OF REINFORCED CONCRETE.

VIBRATING INFEED CONVEYOR

DIM	18 PM-HZF	26 PM-HZF	34 PM-HZF	42 PM-HZF	50 PM-HZF	58 PM-HZF
A	9 5/8	12 9/16	12 9/16	17 3/4	17 3/4	17 3/4
B	12	18	24	36	42	50
C	18	24	30	42	48	56
D	20 1/2	26 1/2	32 1/2	46 1/2	52 1/2	60 1/2
E	16 1/4	24 3/8	30 3/8	42 1/2	48 1/2	56 1/2
F	16	24	30	40	48	56
WT LBS	500	850	900	1250	1800	1920



GENERAL NOTES

1. NOT TO BE USED FOR INSTALLATION.
2. NOT APPLICABLE TO INTEGRAL FAN MODELS.
3. ATTACH HOG BASE PLATE TO STRUCTURAL STEEL SUB-BASE OR CONCRETE AT CUSTOMERS DISCRETION.
4. CONCRETE FOUNDATION SPECIFICATIONS SUPPLIED BY CERTIFIED DRAWING ONLY.