

DIMENSION SHEET

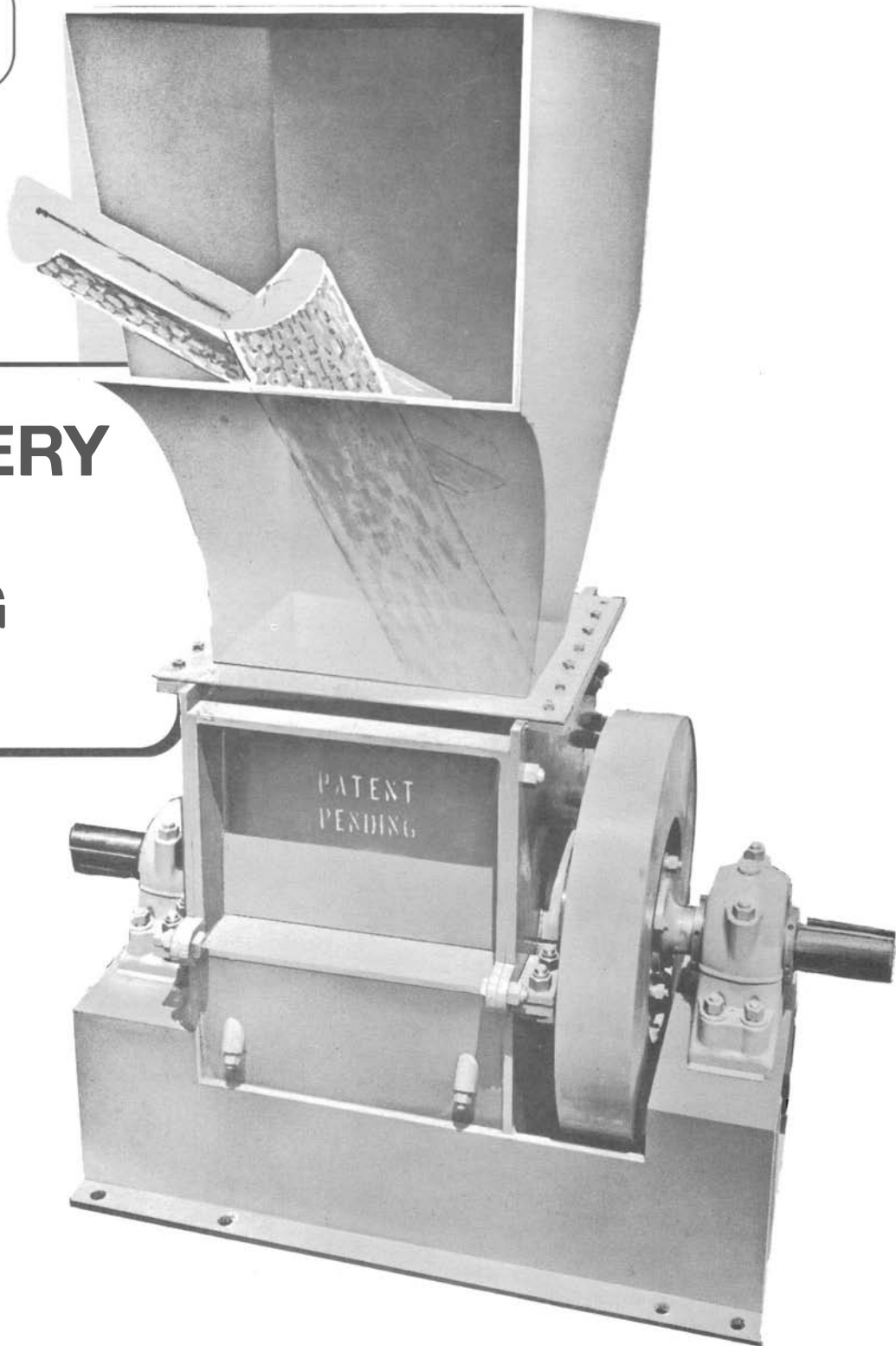
DS 24-1-97

MONTGOMERY

HD Model EAT-RITE HOG

including the
Rechipper Series

*Quality
through
Experience*



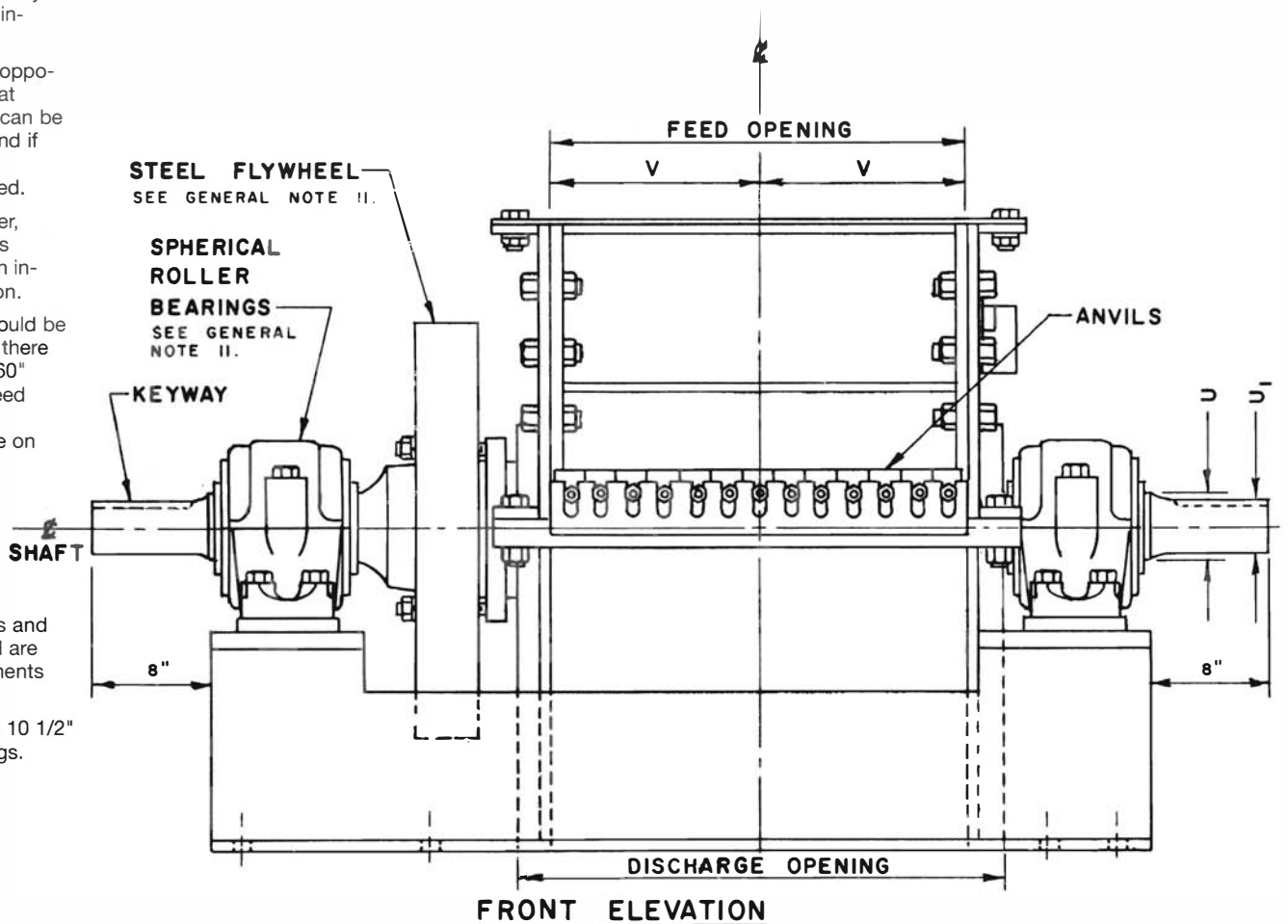
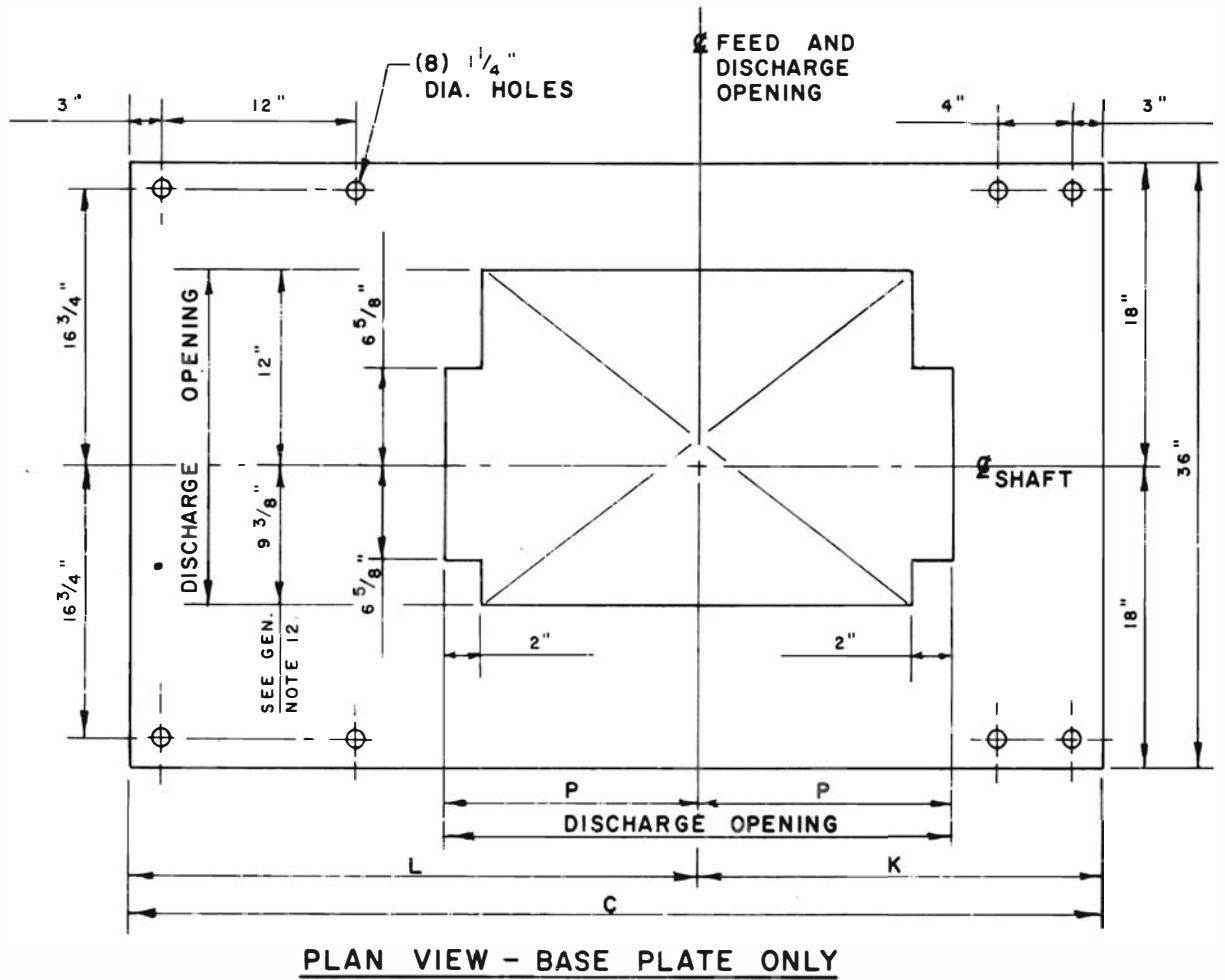
MONTGOMERY INDUSTRIES INTERNATIONAL, INC.

P.O. Box 3687 • 2017 Thelma St.
JACKSONVILLE, FLORIDA U.S.A. 32206
Phone (904) 355-5671 • FAX (904) 355-0401

Since 1925 - Solving Difficult Problems for Industry

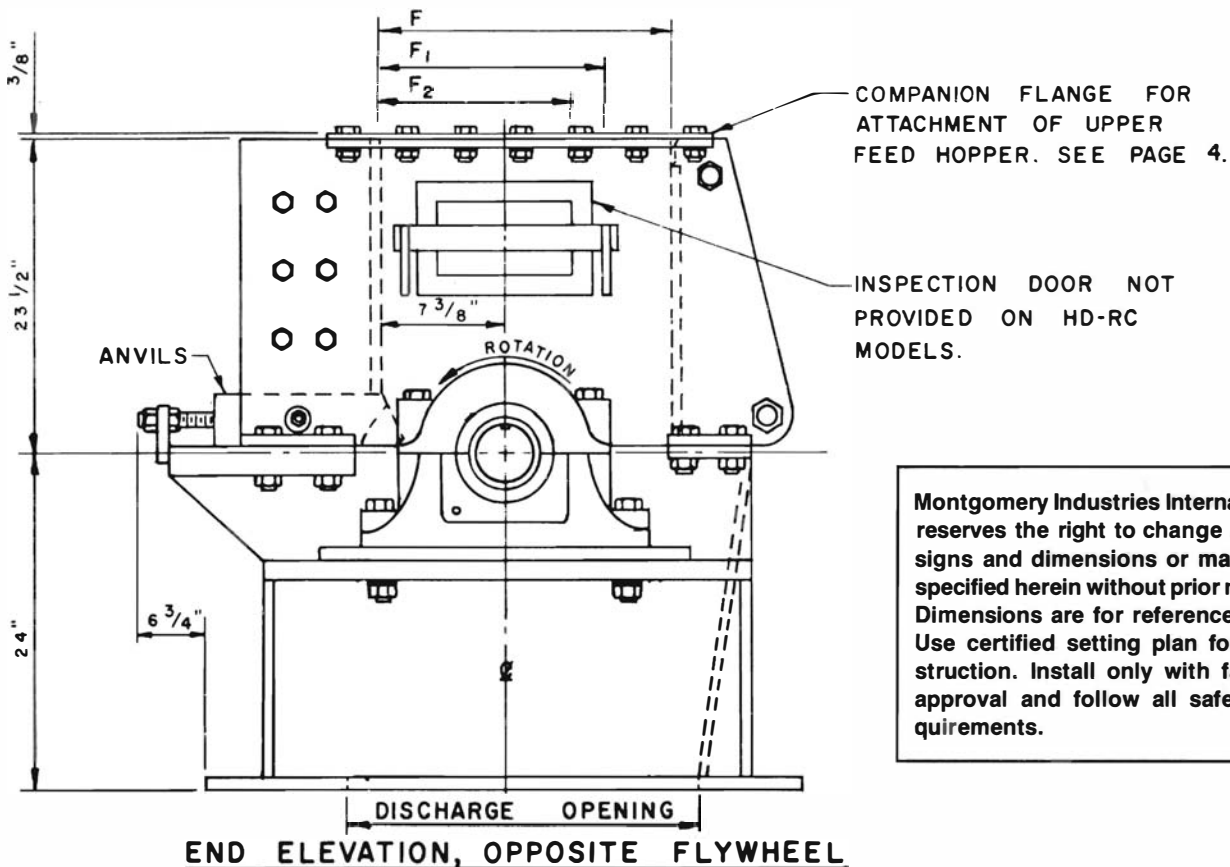
GENERAL NOTES

1. Do not feed against rotation — feed may be from any of other three directions.
2. Hog must be mounted with base horizontal. Do not mount hog on an angle to facilitate feeding.
3. Use a reinforced concrete foundation 12" minimum thickness, to extend 6" beyond hog base on all sides. In cold climates the depth will be determined by the frost line.
4. Feed opening varies with application and type of material being fed into hog, but will be one of the following:
 $F = 17\frac{3}{8}"$
 $F_1 = 13\frac{3}{8}"$
 $F_2 = 11\frac{3}{8}"$
5. During normal operation there is very little impact or vibration load transmitted to the base of the machine. However, if Hog is to be mounted on steel columns, the supporting structure should be designed for two-and-one-half times the static load for safety.
6. All dimensions shown are standard and may vary with special installations.
7. Hog can be built opposite hand from that shown. Flywheel can be mounted either end if requested before assembly is started.
8. Upper feed hopper, when furnished, is designed for each individual installation.
9. Upper hopper should be designed so that there is a minimum of 60" from the top of feed conveyor belt to companion flange on upper housing.
10. Allow 36" clearance all around machine for maintenance.
11. 3 $15\frac{15}{16}"$ Bearings and 4" x 36" Flywheel are standard components for HD-RC Hogs.
12. This dimension is 10 $1\frac{1}{2}"$ on all HD-RC Hogs.

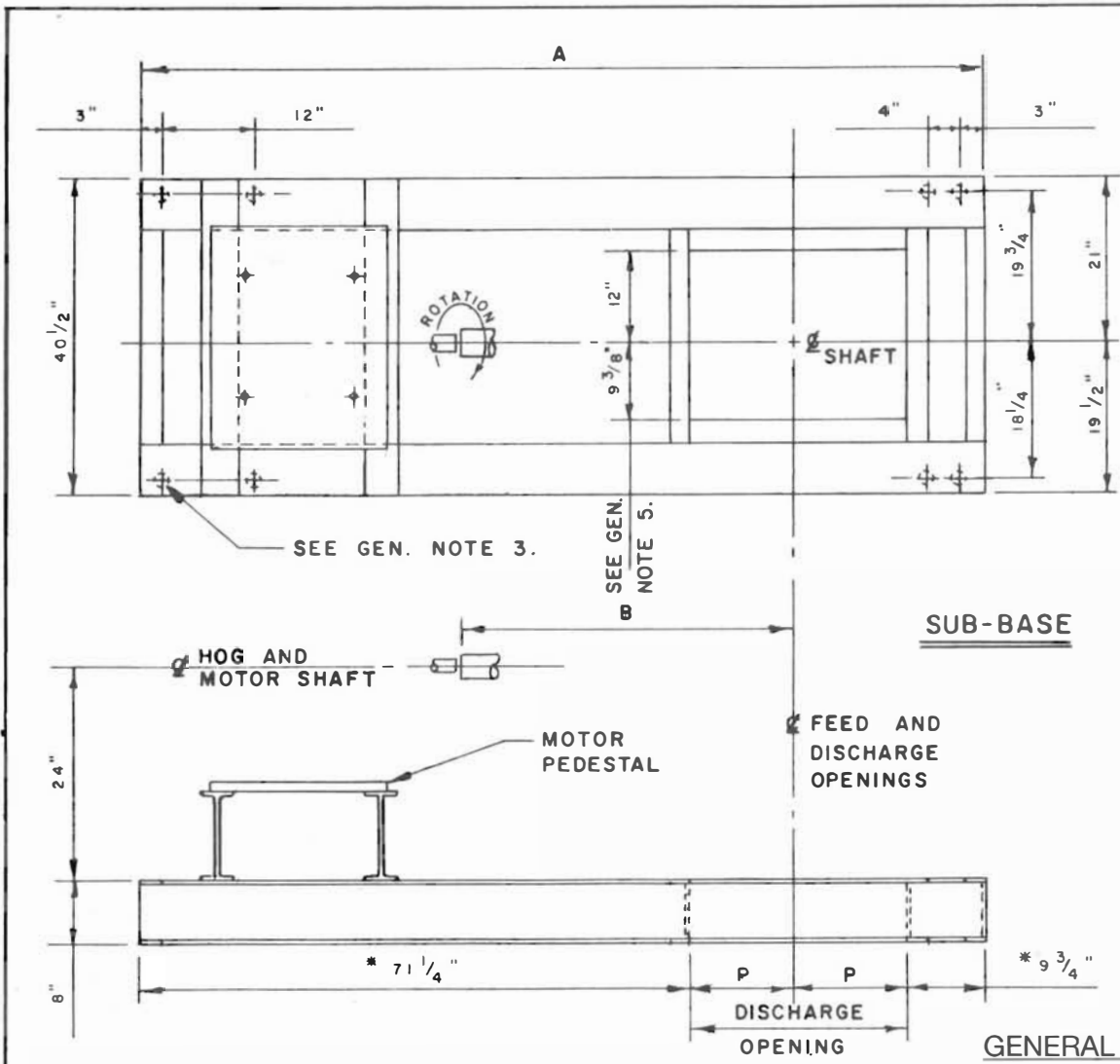


DIMENSIONS IN INCHES

MODEL	BEARING SIZE	STANDARD FLYWHEEL	C	K	L	P	U	U ₁	V		KEYWAY	WEIGHT — LBS.		WR ² #FT. ²
									HD	HD-RC		HD	HD-RC	
10 HD	3 15/16	4 x 36	43 3/4	16 7/8	26 7/8	7 1/8	3 15/16	3 7/16	5 1/8	4 3/8	7/8 x 7/16 x 7 7/16	5,000	5,200	1,377
"	4 7/16	"	"	"	"	"	4 7/16	3 15/16	"	"	1 x 1/2 x 7 1/2	5,100		"
18 HD	3 15/16	"	51 3/4	20 7/8	30 7/8	11 1/8	3 15/16	3 7/16	9 1/8	8 3/8	7/8 x 7/16 x 7 7/16	5,800	6,100	1,439
"	4 7/16	"	"	"	"	"	4 7/16	3 15/16	"	"	1 x 1/2 x 7 1/2	5,900		"
"	5 7/16	6 x 36	53 3/4	21 7/8	31 7/8	"	5 7/16	4 7/16	"	"	1 x 1/2 x 7 1/2	6,550		2,088
26 HD	3 15/16	4 x 36	59 3/4	24 7/8	34 7/8	15 1/8	3 15/16	3 7/16	13 1/8	12 3/8	7/8 x 7/16 x 7 7/16	6,600	7,000	1,501
"	4 7/16	"	"	"	"	"	4 7/16	3 15/16	"	"	1 x 1/2 x 7 1/2	6,700		"
"	5 7/16	6 x 36	61 3/4	25 7/8	35 7/8	"	5 7/16	4 7/16	"	"	1 x 1/2 x 7 1/2	7,350		2,150
34 HD	3 15/16	4 x 36	67 3/4	28 7/8	38 7/8	19 1/8	3 15/16	3 7/16	17 1/8	16 3/8	7/8 x 7/16 x 7 7/16	7,400	7,900	1,563
"	4 7/16	6 x 36	"	"	"	"	4 7/16	3 15/16	"	"	1 x 1/2 x 7 1/2	7,950		2,212
"	5 7/16	"	69 3/4	29 7/8	39 7/8	"	5 7/16	4 7/16	"	"	1 x 1/2 x 7 1/2	8,150		"
42 HD	3 15/16	4 x 36	75 3/4	32 7/8	42 7/8	23 1/8	3 15/16	3 7/16	21 1/8	20 3/8	7/8 x 7/16 x 7 7/16	8,200	8,800	1,625
"	4 7/16	6 x 36	"	"	"	"	4 7/16	3 15/16	"	"	1 x 1/2 x 7 1/2	8,750		2,274
"	5 7/16	"	77 3/4	33 7/8	43 7/8	"	5 7/16	4 7/16	"	"	1 x 1/2 x 7 1/2	8,950		"
50 HD	3 15/16	4 x 36	83 3/4	36 7/8	46 7/8	27 1/8	3 15/16	3 7/16	25 1/8	24 3/8	7/8 x 7/16 x 7 7/16	9,000	9,700	1,687
"	4 7/16	6 x 36	"	"	"	"	4 7/16	3 15/16	"	"	1 x 1/2 x 7 1/2	9,550		2,336
"	5 7/16	"	85 3/4	37 7/8	47 7/8	"	5 7/16	4 7/16	"	"	1 x 1/2 x 7 1/2	9,750		"
58 HD	3 15/16	4 x 36	91 3/4	40 7/8	50 7/8	31 1/8	3 15/16	3 7/16	29 1/8	28 3/8	7/8 x 7/16 x 7 7/16	9,800	10,600	1,748
"	4 7/16	6 x 36	"	"	"	"	4 7/16	3 15/16	"	"	1 x 1/2 x 7 1/2	10,350		2,397
"	5 7/16	"	93 3/4	41 7/8	51 7/8	"	5 7/16	4 7/16	"	"	1 x 1/2 x 7 1/2	10,550		2,397



Montgomery Industries International reserves the right to change its designs and dimensions or materials specified herein without prior notice. Dimensions are for reference only. Use certified setting plan for construction. Install only with factory approval and follow all safety requirements.



DIMENSIONS IN INCHES					
MODEL	BEARING SIZE	A	B	P	WT.-LB.
10-HD & HD-RC	3 ¹⁵ / ₁₆	95 1/4	34 7/8	7 1/8	1173
"	4 7/16	"	"	"	"
18-HD & HD-RC	3 ¹⁵ / ₁₆	103 1/4	38 7/8	11 1/8	1226
"	4 7/16	"	"	"	"
"	5 7/16	105 1/4	39 7/8	"	"
26-HD & HD-RC	3 ¹⁵ / ₁₆	111 1/4	42 7/8	15 1/8	1279
"	4 7/16	"	"	"	"
"	5 7/16	113 1/4	43 7/8	"	"
34-HD & HD-RC	3 ¹⁵ / ₁₆	119 1/4	46 7/8	19 1/8	1332
"	4 7/16	"	"	"	"
"	5 7/16	121 1/4	47 7/8	"	"
42-HD & HD-RC	3 ¹⁵ / ₁₆	127 1/4	50 7/8	23 1/8	1385
"	4 7/16	"	"	"	"
"	5 7/16	129 1/4	51 7/8	"	"
50-HD & HD-RC	3 ¹⁵ / ₁₆	135 1/4	64 7/8	27 1/8	1438
"	4 7/16	"	"	"	"
"	5 7/16	137 1/4	55 7/8	"	"
58-HD & HD-RC	3 ¹⁵ / ₁₆	143 1/4	58 7/8	31 1/8	1491
"	4 7/16	"	"	"	"
"	5 7/16	145 1/4	59 7/8	"	"

GENERAL NOTES

1. AN ASTERISK BY A DIMENSION INDICATES TO ADD 1" ON HOGS WITH 5⁷/₁₆" BEARINGS.
2. ALLOW A MINIMUM OF 36" CLEARANCE ALL AROUND FOR MAINTENANCE.
3. (8) 1 1/4" DIA. HOLES FOR 1" N.C. ANCHOR BOLTS. BOLTS TO EXTEND 3" ABOVE A MINIMUM OF 12" OF REINFORCED CONCRETE.
4. MOTOR CAN BE MOUNTED ON THE OPPOSITE END FROM THAT SHOWN.
5. THIS DIMENSION IS 10 1/2" ON ALL HD-RC HOGS.