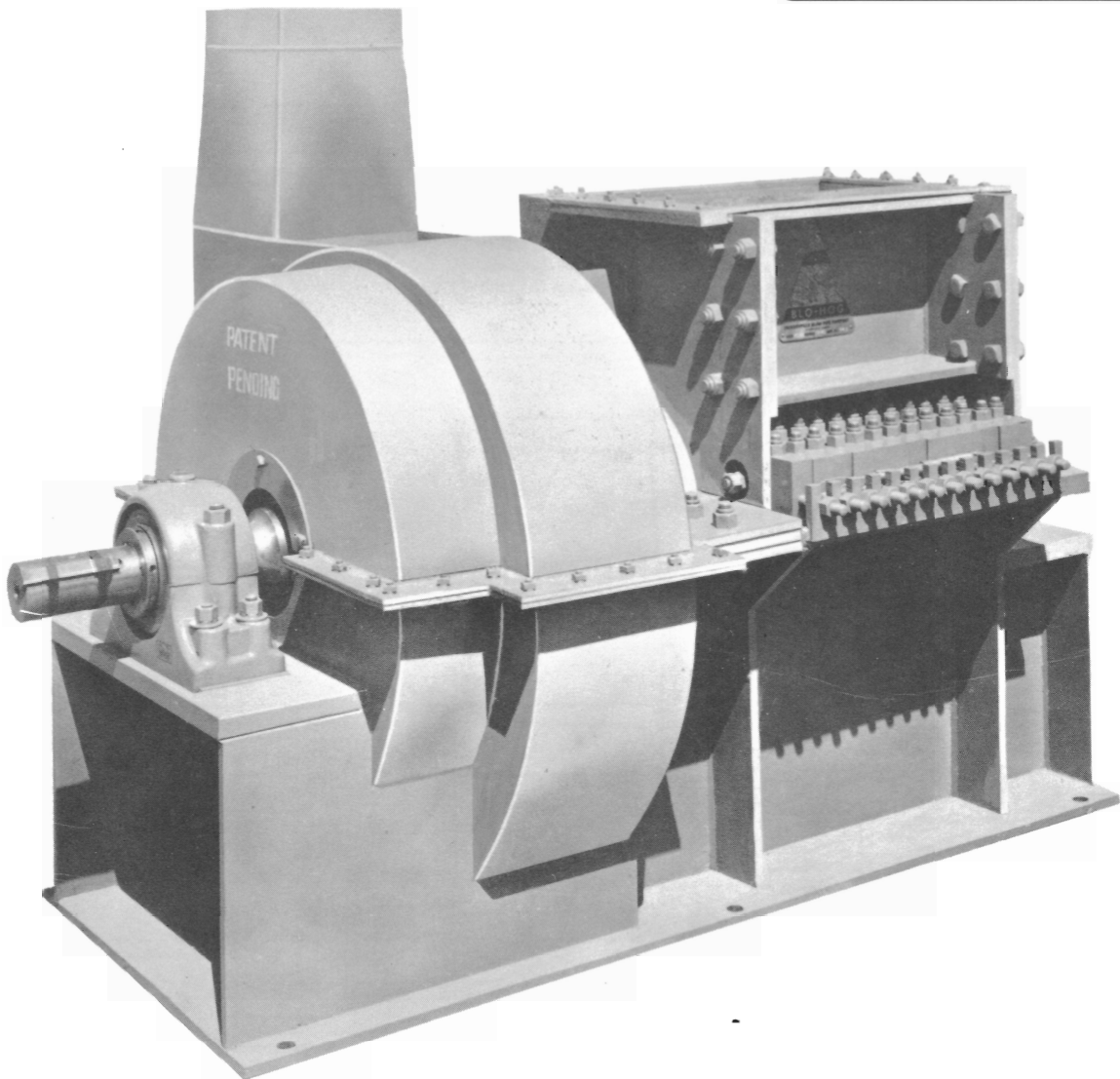


MONTGOMERY

PM Model
BLO•HOG®

DIMENSION SHEET

DS 24-4-97

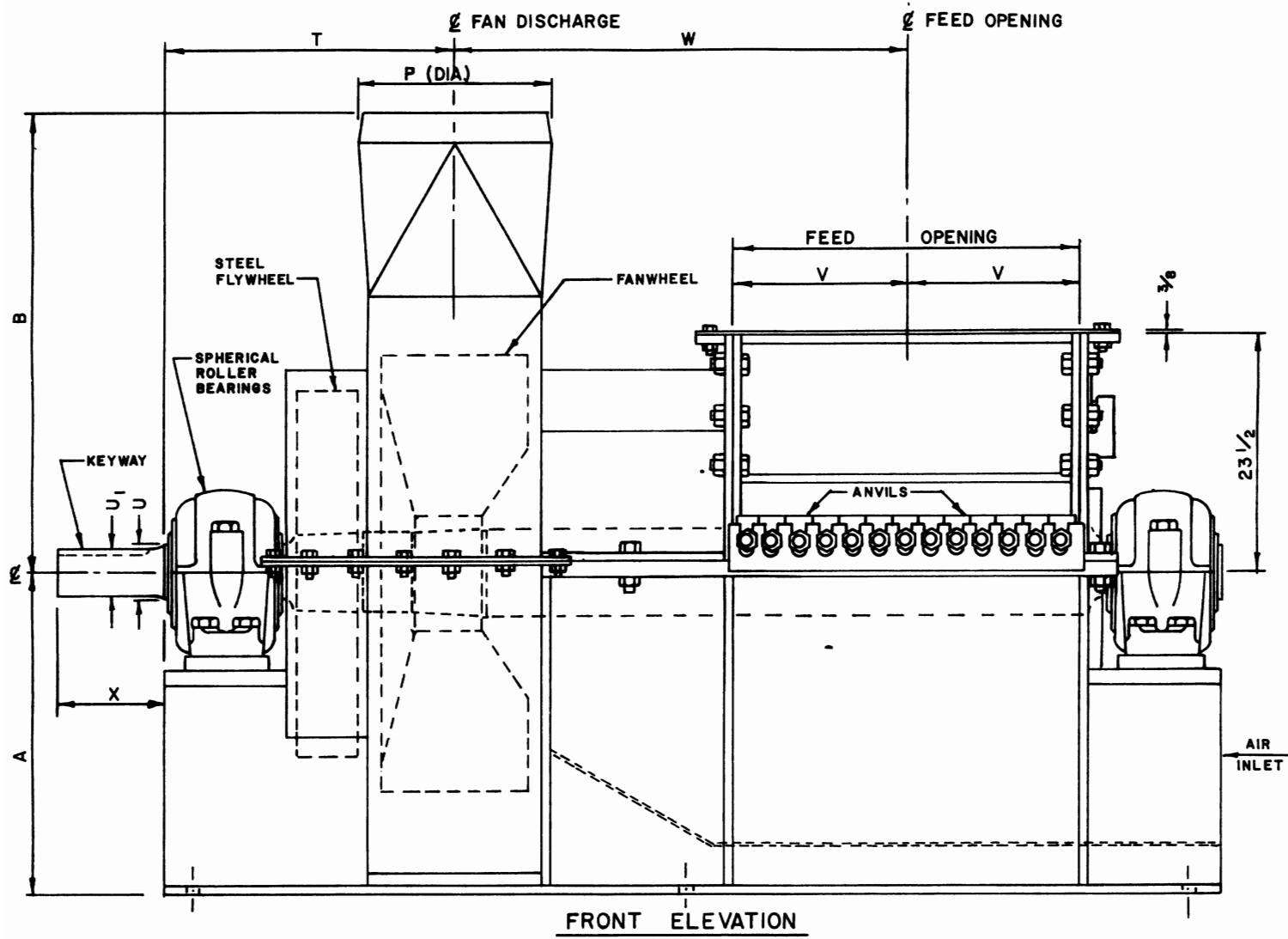
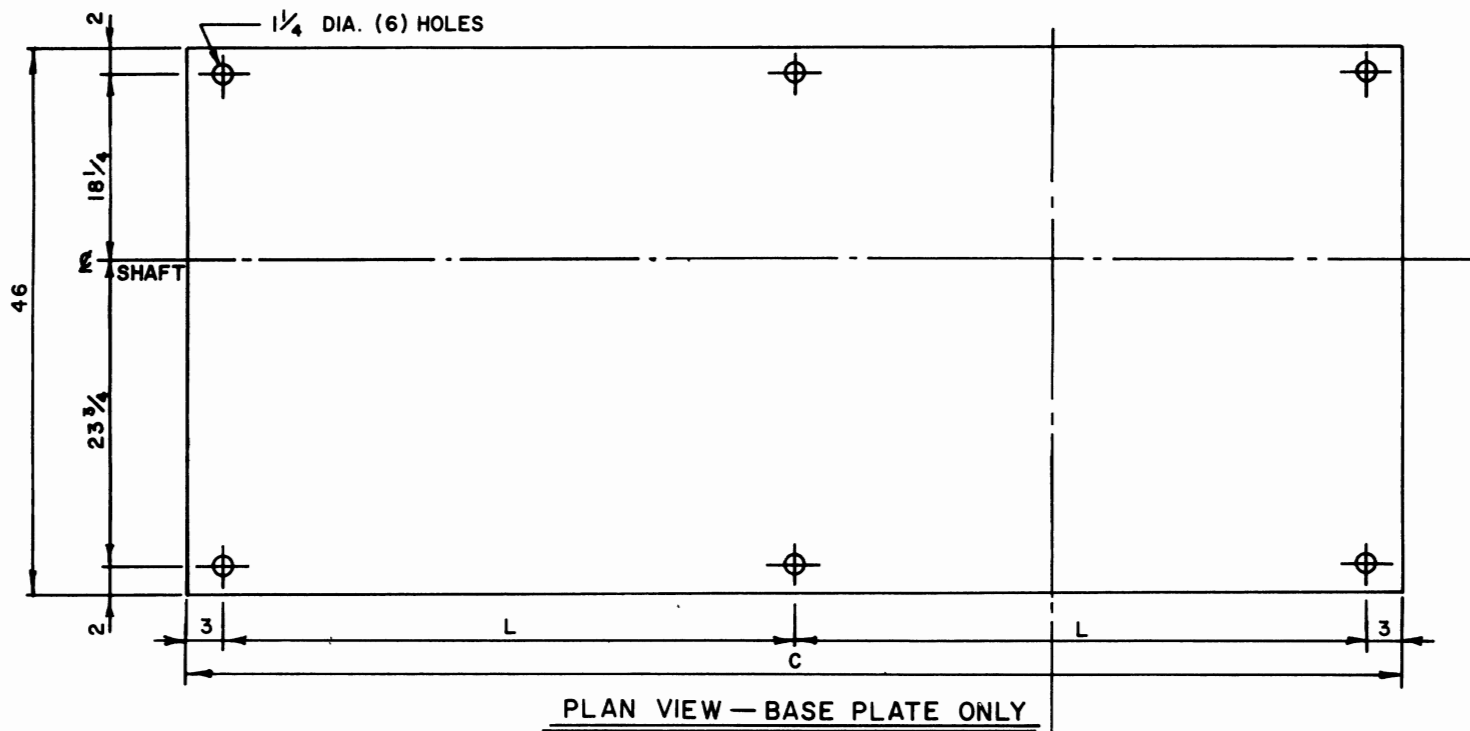


MONTGOMERY INDUSTRIES INTERNATIONAL, INC.

P.O. Box 3687 • 2017 Thelma St.
JACKSONVILLE, FLORIDA U.S.A. 32206
Phone (904) 355-5671 • FAX (904) 355-0401

Since 1925 - Solving Difficult Problems for Industry

PM MODEL BLO-HOGS



PM MODEL BLO-HOGS

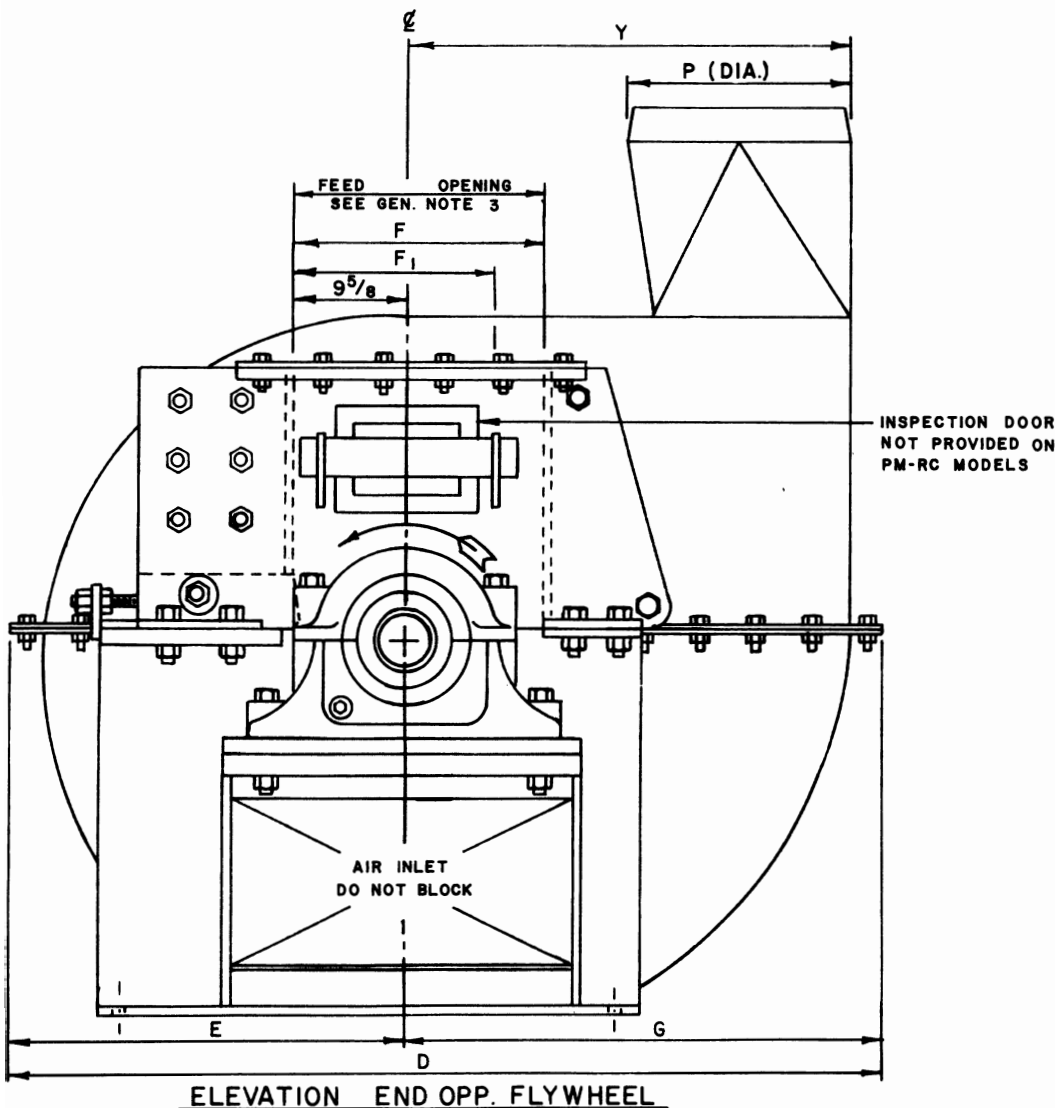
MODEL	BEARING SIZE	FAN SIZE	STANDARD FLYWHEEL	A	B	C	D	E	G	L	P	T	U	U ₁	V	W	X	Y	KEYWAY	WEIGHT #	WR ² # FT ²
18PM40	4 ⁷ / ₁₆	40	4x36	28 ³ / ₄	39 ³ / ₄	75 ³ / ₈	59	26 ⁷ / ₁₆	32 ¹ / ₈	34 ¹¹ / ₁₆	13-17	25 ¹³ / ₁₆	4 ⁷ / ₁₆	3 ¹⁵ / ₁₆	9 ¹ / ₈	28 ¹¹ / ₁₆	8	29 ⁹ / ₈	1 x 1/2 x 7 1/2	10,200	2,167
18PM50	"	50	6x36	35 ⁷ / ₈	45 ³ / ₈	84 ⁷ / ₈	73 ¹ / ₄	33 ¹ / ₄	40	39 ⁷ / ₁₆	18-21	27 ⁹ / ₁₆	"	"	"	36 ⁷ / ₁₆	"	37 ¹ / ₂	"	11,300	3,309
18PM60	5 ⁷ / ₁₆	60	"	41 ³ / ₄	50 ¹ / ₄	89 ¹ / ₂	85	38 ³ / ₈	46 ³ / ₈	41 ³ / ₄	22-25	30	5 ⁷ / ₁₆	4 7/16	"	37 ³ / ₄	10	43 ⁷ / ₈	1 x 1/2 x 8 1/2	12,400	4,959
26PM40	4 ⁷ / ₁₆	40	"	28 ³ / ₄	39 ³ / ₄	83 ³ / ₈	59	26 ⁷ / ₁₆	32 ¹ / ₈	38 ¹¹ / ₁₆	13-17	25 ¹³ / ₁₆	4 ⁷ / ₁₆	3 ¹⁵ / ₁₆	13 ¹ / ₈	32 ¹¹ / ₁₆	8	29 ⁹ / ₈	1 x 1/2 x 7 1/2	11,850	2,692
26PM50	"	50	"	35 ⁷ / ₈	45 ³ / ₈	92 ⁷ / ₈	73 ¹ / ₄	33 ¹ / ₄	40	43 ⁷ / ₁₆	18-21	27 ⁹ / ₁₆	"	"	"	40 ⁷ / ₁₆	10	37 ¹ / ₂	1 x 1/2 x 8 1/2	12,300	3,455
"	5 ⁷ / ₁₆	50	"	"	"	94 ⁷ / ₈	"	"	"	44 ⁷ / ₁₆	"	28 ⁹ / ₁₆	5 ⁷ / ₁₆	4 7/16	"	"	"	"	"	12,500	3,455
26PM60	"	60	"	41 ³ / ₄	50 ¹ / ₄	97 ¹ / ₂	85	38 ³ / ₈	46 ³ / ₈	45 ³ / ₄	22-25	30	"	"	"	41 ³ / ₄	10	43 ⁷ / ₈	"	13,600	5,105
26PM70	"	70	"	48 ³ / ₈	58 ¹ / ₄	100 ¹ / ₂	98	44 ³ / ₈	53 ³ / ₈	47 ¹ / ₄	26-29	31 ¹ / ₈	"	"	"	43 ¹ / ₄	"	51 ¹ / ₈	"	14,650	7,495
34PM50	"	50	"	35 ⁷ / ₈	45 ³ / ₈	102 ⁷ / ₈	73 ¹ / ₄	33 ¹ / ₄	40	48 ⁷ / ₁₆	18-21	28 ⁹ / ₁₆	"	"	17 ¹ / ₈	44 ⁷ / ₁₆	10	37 ¹ / ₂	"	13,500	3,601
34PM60	"	60	"	41 ³ / ₄	50 ¹ / ₄	105 ¹ / ₂	85	38 ³ / ₈	46 ³ / ₈	49 ³ / ₄	22-25	30	"	"	"	45 ³ / ₄	10	43 ⁷ / ₈	"	14,600	5,250
34PM70	"	70	"	48 ³ / ₈	58 ¹ / ₄	108 ¹ / ₂	98	44 ³ / ₈	53 ³ / ₈	51 ¹ / ₄	26-29	31 ¹ / ₈	"	"	"	47 ¹ / ₄	"	51 ¹ / ₈	"	15,650	7,640
42PM60	"	60	"	41 ³ / ₄	50 ¹ / ₄	113 ¹ / ₂	85	38 ³ / ₈	46 ³ / ₈	53 ³ / ₄	22-25	30	"	"	21 ¹ / ₈	49 ³ / ₄	"	43 ⁷ / ₈	"	15,600	5,395
42PM70	"	70	"	48 ³ / ₈	58 ¹ / ₄	116 ¹ / ₂	98	44 ³ / ₈	53 ³ / ₈	55 ¹ / ₄	26-29	31 ¹ / ₈	"	"	"	51 ¹ / ₄	"	51 ¹ / ₈	"	16,650	7,785
42PM80	"	80	"	54 ³ / ₄	63 ¹ / ₂	119 ³ / ₄	111	50 ¹ / ₄	60 ³ / ₄	56 ⁷ / ₈	30-33	33	"	"	"	52 ⁷ / ₈	"	58 ¹ / ₄	"	17,650	10,875
50PM70	"	70	"	48 ³ / ₈	58 ¹ / ₄	124 ¹ / ₂	98	44 ³ / ₈	53 ³ / ₈	59 ¹ / ₄	26-29	31 ¹ / ₈	"	"	25 ¹ / ₈	55 ¹ / ₄	"	51 ¹ / ₈	"	17,650	7,931
50PM80	"	80	"	54 ³ / ₄	63 ¹ / ₂	127 ³ / ₄	111	50 ¹ / ₄	60 ³ / ₄	60 ⁷ / ₈	30-33	33	"	"	"	56 ⁷ / ₈	"	58 ¹ / ₄	"	18,650	11,021
58PM70	"	70	"	48 ³ / ₈	58 ¹ / ₄	132 ¹ / ₂	98	44 ³ / ₈	53 ³ / ₈	63 ¹ / ₄	26-29	31 ¹ / ₈	"	"	29 ¹ / ₈	59 ¹ / ₄	"	51 ¹ / ₈	"	18,650	8,076
58PM80	"	80	"	54 ³ / ₄	63 ¹ / ₂	135 ³ / ₄	111	50 ¹ / ₄	60 ³ / ₄	64 ⁷ / ₈	30-33	33	"	"	"	60 ⁷ / ₈	"	58 ¹ / ₄	"	19,650	11,166

NOTE: On R. C. "RECHIPPER" Models Dimension "V" is 3/4" Less Than Shown

Montgomery Industries International reserves the right to change its designs and any dimensions or materials specified herein without prior notice. Dimensions are for reference only. Use certified setting plan for construction. Install only with factory approval and follow all safety requirements.

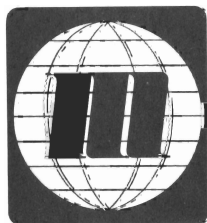
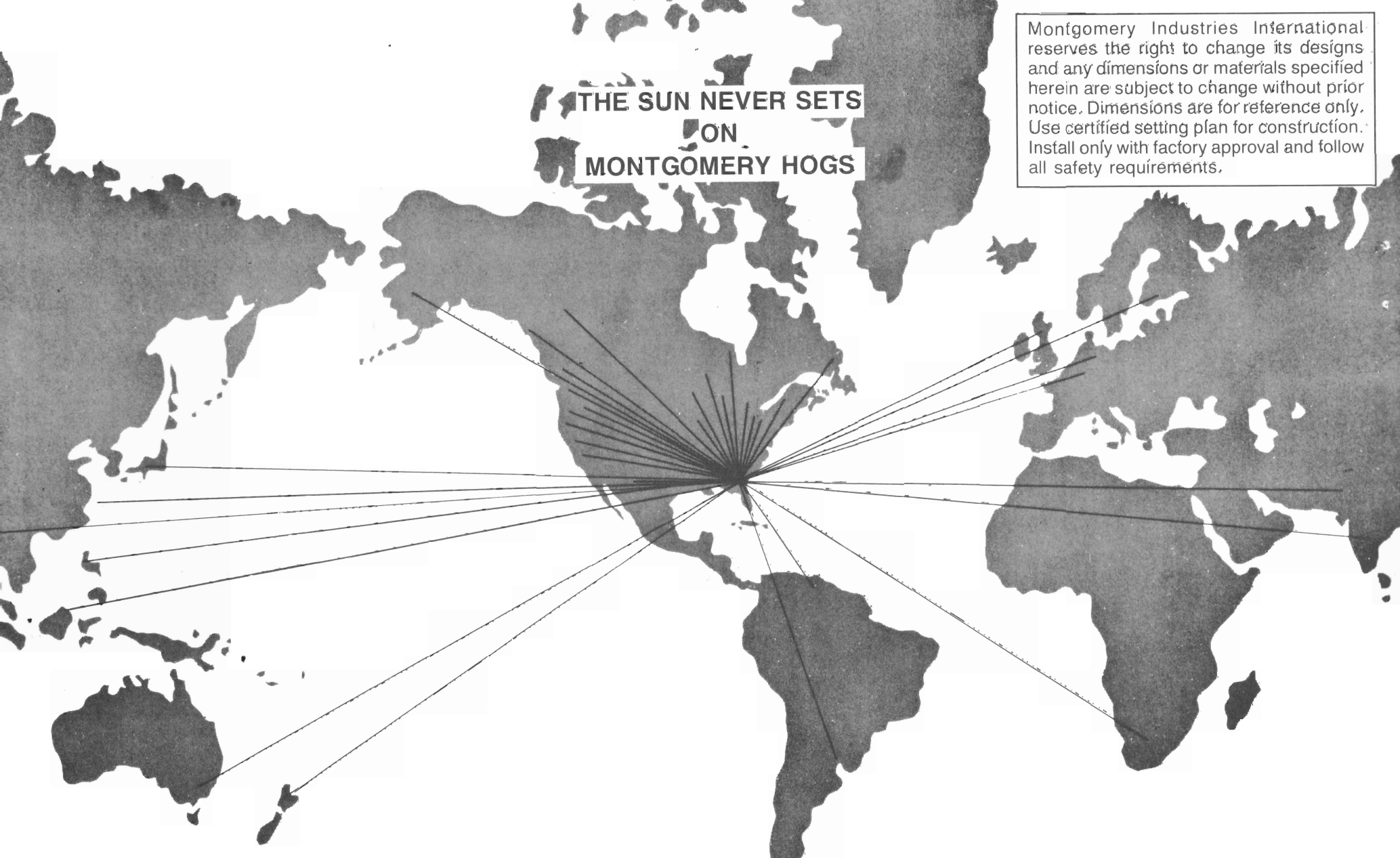
GENERAL NOTES

- Do not feed against rotation — feed may be from any of other three directions.
- Use a reinforced concrete foundation 12" minimum thickness, to extend 6" beyond hog base on all sides. In cold climates the depth will be determined by the frost line.
- Feed Hopper opening "F" varies with application, but will be one of the following:
F = 21" or F₁ = 17".
- During normal operation there is no impact or vibration load transmitted to the base of the machine. However, if Hog is to be mounted on steel columns, the supporting structure should be designed for two-and-one-half times the static load for safety.
- Blo Hog models should have speed and power corrected for altitude for installations above 2000 feet M.S.L.
- All dimensions shown are standard and may vary with special installations.
- Hog can be built opposite hand from that shown and flywheel can be mounted either end if requested before assembly is started.
- Upper feed hopper, when furnished, is designed for each individual installation.
- Upper feed hopper is designed so that there is a minimum of 5' from the top of feed conveyor belt to companion flange on lower hopper.
- Allow 3' clearance all around machine for maintenance.



**THE SUN NEVER SETS
ON
MONTGOMERY HOGS**

Montgomery Industries International reserves the right to change its designs and any dimensions or materials specified herein are subject to change without prior notice. Dimensions are for reference only. Use certified setting plan for construction. Install only with factory approval and follow all safety requirements.



INSTALLATIONS AROUND THE WORLD

- ARGENTINA • AUSTRALIA • BAHAMAS • BANGLADESH • BELGIUM • BRAZIL
- CANADA • CEYLON • CHILE • DUTCH GUIANA • ECUADOR • ENGLAND
- FORMOSA • FRANCE • GHANA • HONDURAS • HONG KONG • INDIA • JAPAN
- LIBERIA • MALAYSIA • MEXICO • NEW ZEALAND • PHILIPPINE ISLANDS
- POLAND • PUERTO RICO • REPUBLIC OF CHINA • RUSSIA • SCOTLAND • SOUTH AFRICA
- SWAZILAND • SWEDEN • UNITED STATES • VENEZUELA • WESTERN SAMOA • WEST INDIES