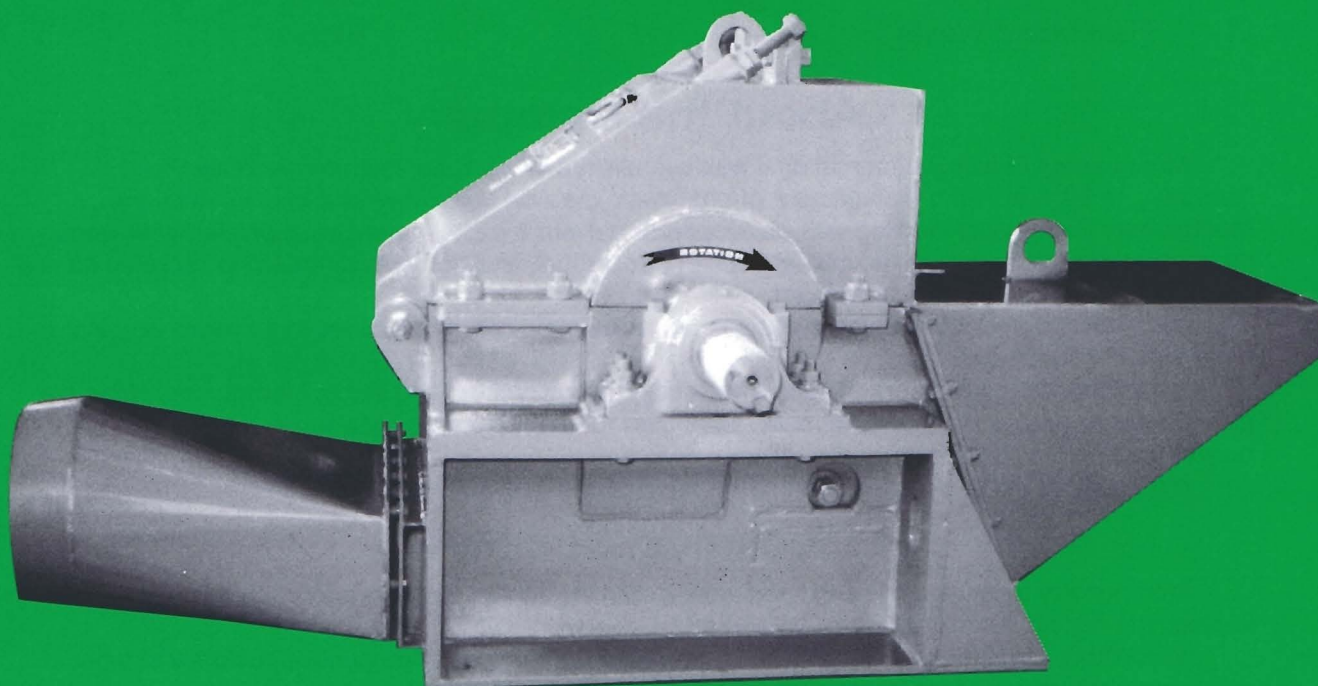


THE *Montgomery* **FS HOG SERIES**

For light-duty wood shredding applications



HORIZONTAL FEED REAR DISCHARGE



MONTGOMERY INDUSTRIES INTERNATIONAL, INC.

P.O. Box 3687 • 2017 Thelma St.
JACKSONVILLE, FLORIDA U.S.A. 32206
Phone (904) 355-5671 • FAX (904) 355-0401

Since 1925 — Solving Difficult Problems for Industry

END SOLID WASTE DISPOSAL PROBLEMS

- ☐ Bark for Fuel
- ☐ Bark for Mulch
- ☐ Battery Casings
- ☐ Box Car Dunnage
- ☐ Bull Screen Rejects
- ☐ Carpet Scrap
- ☐ Corrugated Paper
- ☐ Foam Rubber
- ☐ Furniture Scrap
- ☐ Flakeboard Waste

**All
Montgomery
Products
Are Guaranteed
To Do The Job
They Are Sold
To Do**

- ☐ Gypsum Rock
- ☐ Industrial Trash
- ☐ Municipal Refuse
- ☐ Pallet Scrap
- ☐ Paper
- ☐ Particleboard Trim
- ☐ Plastics
- ☐ Polyurethane Scrap
- ☐ Slabs, Edgings,
Blocks

About the Company

Montgomery Industries International was established in 1925, as Jacksonville Blow Pipe Company, to engage in the manufacture of pneumatic material conveying systems. In 1946, the Montgomery Punch-and-Die Hog was developed to pulverize waste materials associated with wood processing operations for use as animal bedding, boiler fuel, and horticultural mulch or recycled as raw material for manufacturing particleboard.

Today Montgomery Industries manufactures a complete line of machines to pulverize or grind most types of solid waste.

Besides wood related scrap such as cut-offs, edgings, veneer and slabs, Montgomery Hogs are pulverizing or grinding asphalt cake, bark, cardboard tubes, magazines, newspapers, pallets, polyurethane scrap, rubber tires, and security documents.

Montgomery Hogs are operating in the United States and 35 foreign countries.

Technical Support

Montgomery Industries has prepared videos on many of the most common applications to supplement our product catalog and brochures.

In addition, Montgomery Industries will test grind a sample of a prospective customer's material and return their end product for inspection.

Our regional sales managers and well trained network of independent factory representatives will assist you in determining the right machine for your specific application.

Installation and start-up follows conventional industry practice and normally does not require a factory installation technician.

If requested, factory trained technicians are available for on site service or to assist with equipment installation.

Customer Service

Our customers are our most valued asset. Trained technicians are available from 7:00 a.m. to 5:00 p.m. Eastern Time, Monday through Friday and a phone number is provided for after hour emergencies.

Our factory maintains a complete rebuild service for worn parts which are normally returned within five to seven days after arrival at our facility.

Whether your Montgomery Hog is four years old or forty, we can provide replacement parts and service. We maintain an inventory of most standard replacement parts for immediate shipment. Non-standard parts are built to order.



INSTALLATIONS IN THESE COUNTRIES

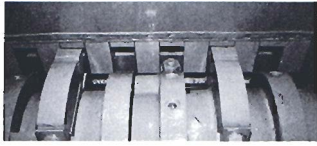
• ARGENTINA • AUSTRALIA • BANGLADESH • BELGIUM • BRAZIL • CANADA
• FINLAND • FORMOSA • FRANCE • GHANA • INDIA • JAPAN • MALAYSIA
• MEXICO • NEW ZEALAND • PHILIPPINE ISLANDS • POLAND • SCOTLAND
• SOUTH AFRICA • SURINAME • SWAZILAND • SWEDEN • UNITED STATES
• VENEZUELA • WEST INDIES

General Information

Principal of Operation

Benefits

All FS Model Hogs employ a unique cutting action involving stationary anvils positioned on the side of the machine with rotating teeth (hammers) that pass through rectangular pockets formed by these anvils. This positive cutting action between the teeth and anvils performs what amounts to the first particle-sizing function in a two stage process. The anvils are adjustable to maintain the proper tooth-anvil clearance for efficient hogging. The wear surfaces of both teeth and anvils are hardfaced for extra long life, and when worn may be rebuilt at about half the cost of new parts. The hogs will handle light tramp steel 1/4-inch and smaller, nails, small bolts, and steel strapping. A unique internal bronze shear pin arrangement helps minimize the damage from heavy tramp steel.



The second sizing action occurs when the material cut by the action of the teeth against the anvils is directed downward and across a curved particle-sizing screen which fits underneath the rotating element. The screen contains either round or rectangular-shaped openings whose size is determined by the specific application for which the machine is sold. Small round or square holes are used to produce a smaller particle size. Larger round or rectangular openings produce chunky pieces having a greater cross-section and length. The discharge from Montgomery Hogs is generally quite uniform in size, containing a minimum of fines.

Infeed & Discharge Options

The gravity infeed model is designed for feeding with an inclined belt conveyor into an upper feed hopper. This model has more capacity than the horizontal infeed unit.

The maximum length of scrap it will accept is usually 8 feet or less and it can be arranged for bottom discharge or can be furnished with an integral fan (Blo-Hog Model) which will pneumatically convey the hogged material up to 100 feet.

The horizontal infeed model is recommended for feeding scrap longer than 8 feet or where overhead space is limited. Discharge options include bottom discharge, rear discharge, or the unit can be equipped with an integral fan (Blo-Hog Model). (Note: On horizontal infeed models, air is required on hog discharge if holes in screen are less than 3 inches in diameter.)

The FS Hog Series is designed for light-duty wood shredding applications. This unit can process thin edgings and trim-ends up to 1" thick and will accept an occasional 2x4. The FS Model Hog will accept all species of hardwood and softwood, green or dry.

The unique punch-and-die cutting process which uses rotating teeth and fixed anvils allows wood scrap to be processed into a uniform end product which can be used for animal bedding, boiler fuel, mulch, or compacted for more economical disposal.

Benefits include:

- Uniform end product with a minimum of unwanted fines.
- Built-in shear pin protection minimizes damage from tramp metal.
- Teeth and anvils are replaceable for quick and easy maintenance.

Design Features

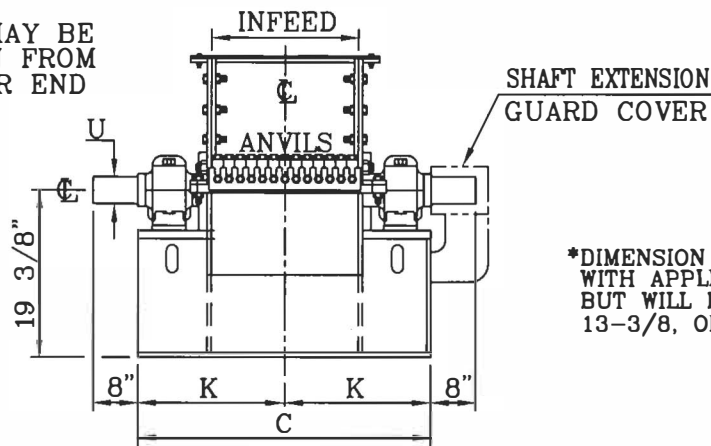
The FS Hog Series has welded steel upper and lower housings and the teeth and anvils are built-up with hard-facing for extra long wear. The FS Hog Series is patterned after the Montgomery HD Hog Series but uses smaller bearings and does not have a flywheel.

The teeth, anvils, screens and breaker rings used on the FS Hog Series are interchangeable with the Montgomery HD Hog Series for compatibility.

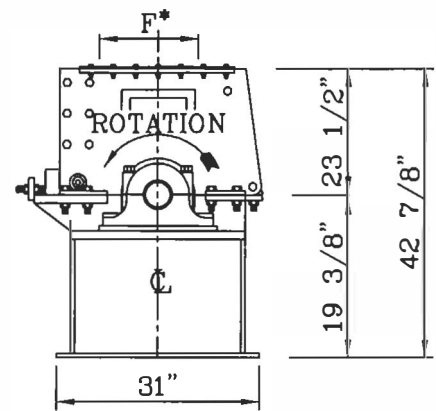
Features Include:

- 18-3/4" cutting circle
- Capacities to 7 tons per hour
- Motor sizes of 30-150 Horsepower
- Removable screen
- Spherical Roller Bearings
- Unit can be driven from either end

HOG MAY BE
DRIVEN FROM
EITHER END



*DIMENSION F VARIES
WITH APPLICATION,
BUT WILL BE 11-3/8,
13-3/8, OR 17-3/8.

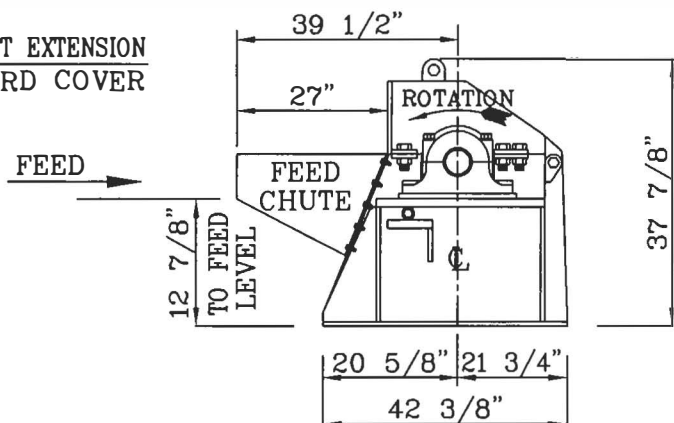
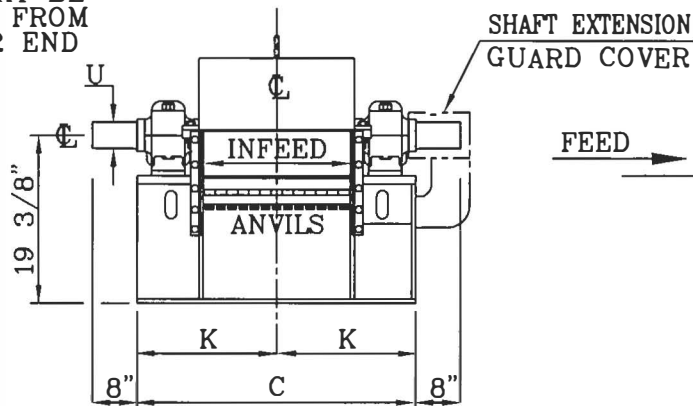


DIMENSIONS IN INCHES

MODEL	BEARING SIZE	C	F*	INFEED	K	U
10 FS	2-15/16	24-1/2	Varies	10-1/4	12-1/4	2-15/16
18 FS	2-15/16	32-1/2	Varies	18-1/4	16-1/4	2-15/16
26 FS	3-15/16	40-1/2	Varies	26-1/4	20-1/4	3-7/16

*GRAVITY INFEED
BOTTOM DISCHARGE*

HOG MAY BE
DRIVEN FROM
EITHER END

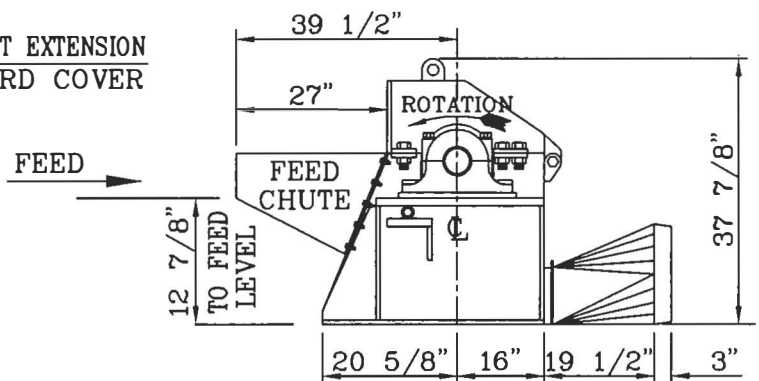
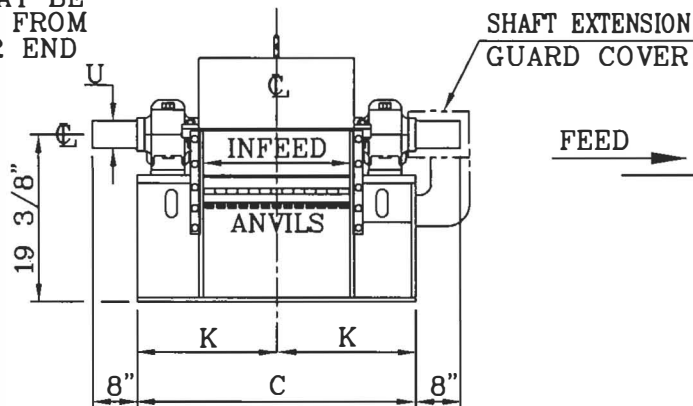


DIMENSIONS IN INCHES

MODEL	BEARING SIZE	C	INFEED	K	U
10 FS-HZF	2-15/16	24-1/2	10-1/4	12-1/4	2-15/16
18 FS-HZF	2-15/16	32-1/2	18-1/4	16-1/4	2-15/16
26 FS-HZF	3-15/16	44-1/2	26-1/4	20-1/4	3-7/16

*HORIZONTAL INFEED
BOTTOM DISCHARGE*

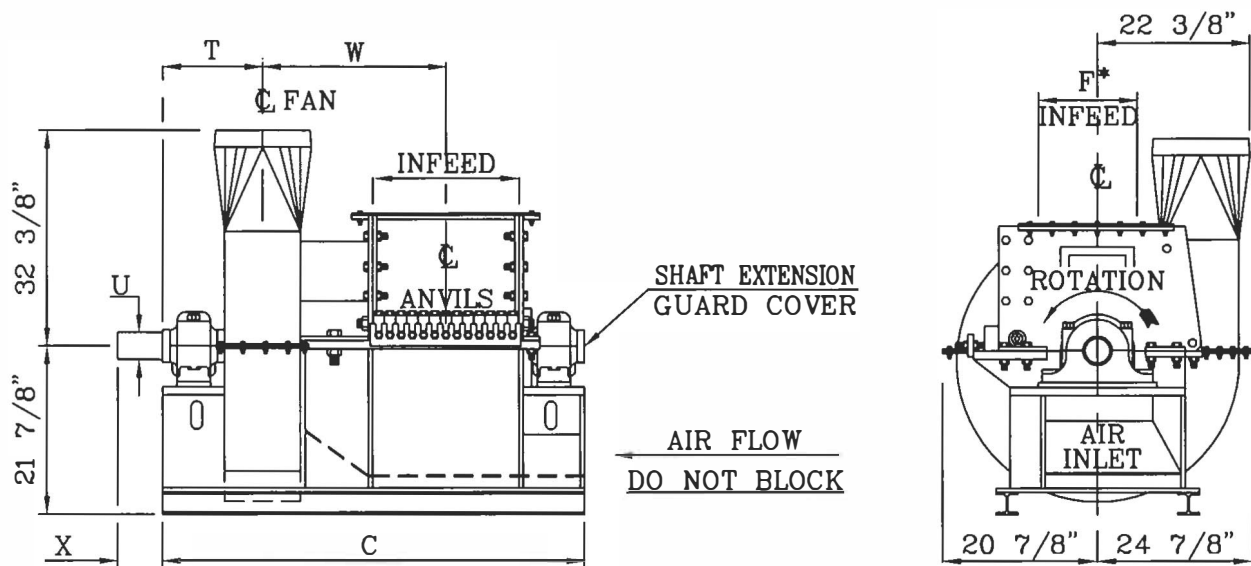
HOG MAY BE
DRIVEN FROM
EITHER END



DIMENSIONS IN INCHES

MODEL	BEARING SIZE	C	INFEED	K	U
10 FS-HZF	2-15/16	24-1/2	10-1/4	12-1/4	2-15/16
18 FS-HZF	2-15/16	32-1/2	18-1/4	16-1/4	2-15/16
26 FS-HZF	3-15/16	44-1/2	26-1/4	20-1/4	3-7/16

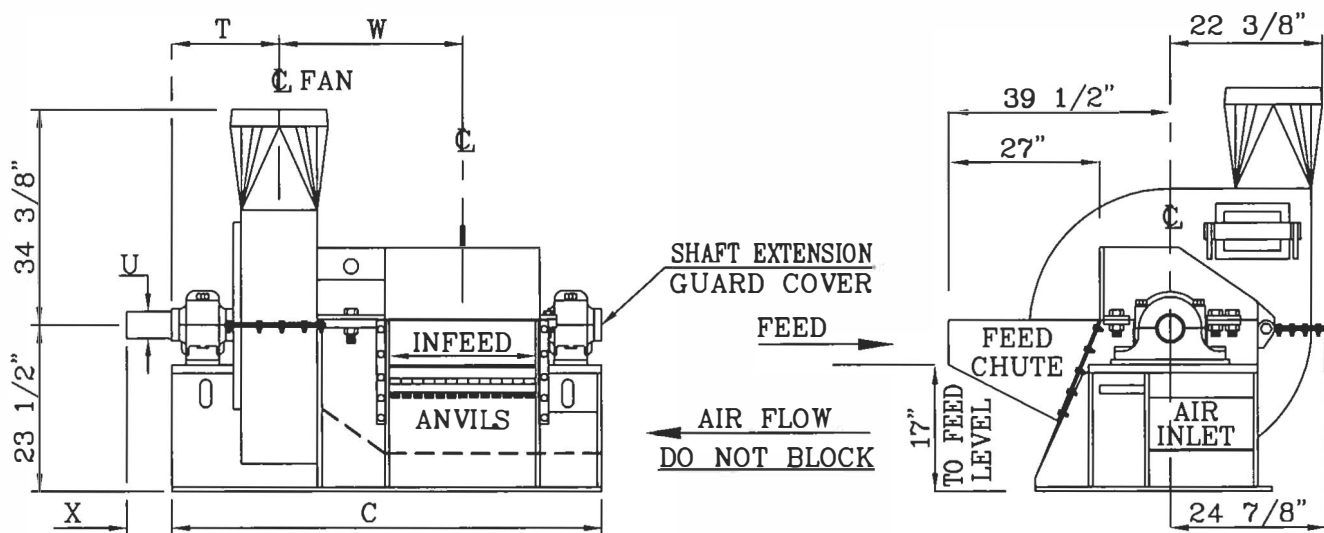
*HORIZONTAL INFEED
REAR DISCHARGE*



GRAVITY INFEED BLO-HOG

DIMENSIONS IN INCHES								
MODEL	BEARING SIZE	C	F*	INFEED	T	U	W	X
10FS30	2-15/16	50	Varies	10-1/4	11-7/16	2-15/16	26-5/16	7
18FS30	2-15/16	58	Varies	18-1/4	11-7/16	2-15/16	30-5/16	7
26FS30	3-15/16	70	Varies	26-1/4	13-7/16	3-7/16	34-5/16	8

*DIMENSION F VARIES WITH APPLICATION, BUT WILL BE 11-3/8, 13-3/8, OR 17-3/8

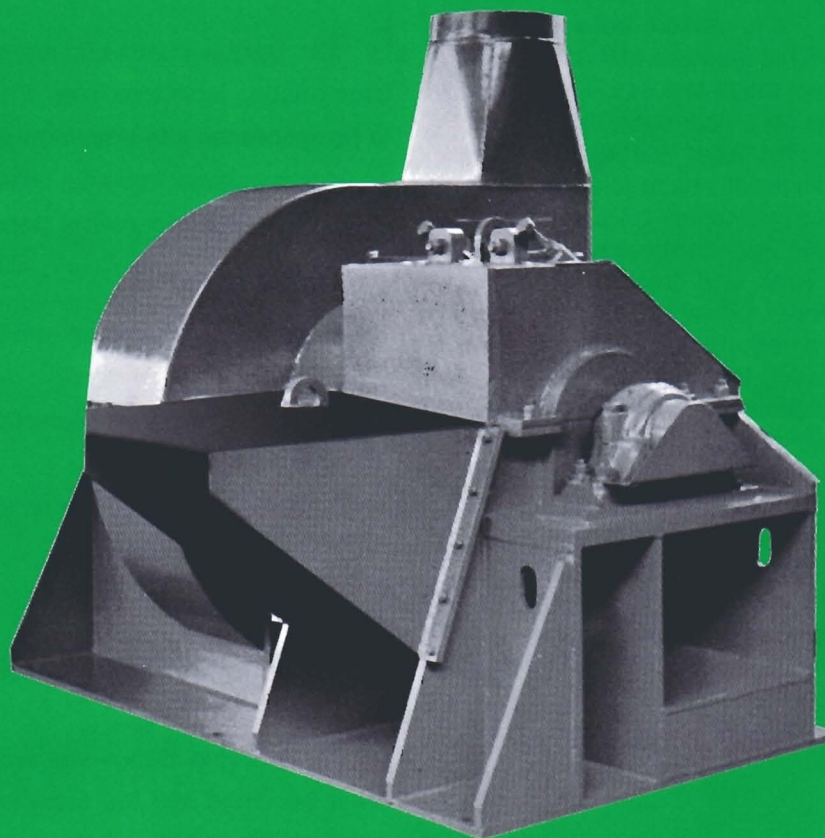


HORIZONTAL INFEED BLO-HOG

DIMENSIONS IN INCHES							
MODEL	BEARING SIZE	C	INFEED	T	U	W	X
10FS30-HZF	2-15/16	50	10-1/4	11-7/16	2-15/16	26-5/16	7
18FS30-HZF	2-15/16	58	18-1/4	11-7/16	2-15/16	30-5/16	7
26FS30-HZF	3-15/16	70	26-1/4	13-7/16	3-7/16	34-5/16	8

THE *Montgomery* FS HOG SERIES

For light-duty wood shredding applications



HORIZONTAL FEED BLO-HOG



Where to Order
MONTGOMERY INDUSTRIES
INTERNATIONAL, INC.

P.O. Box 3687 • 2017 Thelma St.
Jacksonville, Florida 32206 U.S.A.
Phone (904) 355-5671 • FAX (904) 355-0401

Test Grind Service

In certain cases the customer may desire to analyze a sample of the end product prior to placing the order for a Hog. Normally up to a 55-gallon drum of material is sufficient for the factory to conduct a test grind and return a representative sample for analysis. There is no charge for the initial test grind.

If no distributor imprint appears here, contact factory for prompt service:

Distributed by: